

*iNfeel*

VOL.18

*iNfeel*

VOL.18

*iNfeel*

**SOLID**

SM		
SM 403	NEW	G 05
SM 405	NEW	G 09
SM 499	NEW	G 06
SM 592	NEW	G 06
SM 604	NEW	G 09
SM 605	NEW	G 09
SM 829	F G	10
SM 834	G	10
SM 835	F G	10
SM 836	F G	10
SM 839	G	10
SM 843	F G	11
SM 845	F G	11
SM 847	F G	10
SM 849	F G	10
SM 886	F G	10

SL		
SL 249	F G	14
SL 257	F G	15
SL 260	F G	14
SL 261	NEW	F G 15
SL 262	NEW	F G 15
SL 265	NEW	F G 15
SL 273	NEW	F G 15
SL 500	F G	15
SL 513	F G	16
SL 514	G	17
SL 515	G	15
SL 516	F G	15
SL 519	G	15
SL 521	F G	15
SL 522	F G	13
SL 523	F G	15
SL 524	F G	14
SL 526	F G	14
SL 527	F G	15
SL 528	G	14
SL 529	G	15
SL 530	G	15
SL 532	F G	14
SL 533	G	14

SL		
SL 534	F G	14
SL 539	G	15
SL 541	F G	13
SL 542	F G	15
SL 543	F G	13
SL 544	G	14
SL 545	G	14
SL 547	G	14
SL 548	F G	15
SL 549	G	14
SL 551	F G	15
SL 553	F G	13
SL 554	G	16
SL 557	G	14
SL 558	G	14
SL 559	F G	17
SL 560	F G	16
SL 564	F G	14
SL 565	G	14
SL 566	G	14
SL 567	F G	14
SL 568	G	14
SL 570	G	14
SL 571	G	16
SL 579	F G	14
SL 581	F G	16
SL 582	G	17
SL 584	F G	15
SL 585	F G	15
SL 587	G	14
SL 588	G	14
SL 589	F G	15
SL 591	G	14
SL 593	G	14
SL 595	G	16
SL 596	F G	14
SL 597	G	14
SL 598	G	15
SL 599	F G	15
SL 600	F G	13
SL 609	F G	14
SL 610	F G	15

SL		
SL 611	F G	15
SL 612	G	14
SL 613	G	15
SL 614	G	14
SL 616	F G	15
SL 665	F G	15
SL 666	F G	15
SL 669	F G	15

PS		
PS 103	F G	18
PS 104	F G	19
PS 106	F G	19
PS 107	F G	18
PS 108	G	19
PS 109	F G	19

SE		
SE 268	NEW	F G 20
SE 269	NEW	F G 20
SE 281	F G	21
SE 291	F G	21
SE 297	F G	21
SE 637	G	21

SD		
SD 710	NEW	F G 23
SD 753	NEW	F G 23
SD 840	F G	24
SD 841	F G	25
SD 842	F G	24
SD 844	F G	24
SD 846	F G	24
SD 848	F G	25
SD 850	G	25
SD 852	G	25
SD 853	F G	25
SD 854	G	24
SD 856	G	25
SD 858	G	24
SD 863	F G	25
SD 864	F G	24

SD		
SD 865	G	25
SD 866	F G	25
SD 870	F G	25
SD 889	NEW	F G 23
SD 894	NEW	F G 23
SD 914	NEW	F G 24

MD		
MD 424	G	27
MD 970	G	27
MD 974	G	27
MD 975	G	26
MD 976	F G	27

STONE & METAL		
---------------	--	--

ST		
ST 110	F G	38
ST 111	F G	38
ST 118	F G	38
ST 304	NEW	F G 36
ST 310	NEW	F G 36
ST 316	NEW	F G 35
ST 319	NEW	F G 35
ST 340	F G	38
ST 341	F G	38
ST 342	F G	30
ST 343	F G	30
ST 346	F G	30
ST 349	F G	30
ST 358	NEW	F G 35
ST 361	NEW	F G 36
ST 369	NEW	F G 33
ST 382	NEW	F G 33
ST 386	NEW	F G 33
ST 388	NEW	F G 33
ST 392	NEW	F G 29
ST 393	NEW	F G 31
ST 394	NEW	F G 31
ST 640	F G	39
ST 645	F G	39
ST 648	F G	38

ST		
ST 656	F G	38
ST 935	G	39
ST 974	G	39

MT		
MT 209	F G	43
MT 210	F G	43
MT 213	F G	42
MT 216	F G	42
MT 218	F G	42
MT 227	F G	42
MT 229	F G	42
MT 230	G	43
MT 231	F G	43
MT 232	F G	43
MT 236	F G	42
MT 662	F G	43
MT 725	G	41
MT 726	G	41
MT 741	G	42
MT 745	G	43
MT 746	G	42
MT 747	G	43
MT 762	G	41
MT 782	G	41

MS		
MS 712	G	44
MS 717	G	44
MS 733	G	45
MS 737	G	45
MS 738	F G	45

EH		
EH 133	F G	47
EH 134	F G	47
EH 139	G	49
EH 140	G	49
EH 147	G	49
EH 148	G	47
EH 150	G	47
EH 152	G	48

EH		
EH 153	F G	48
EH 158	F G	48
EH 159	G	48

HG		
HG 978	G	51
HG 980	G	51
HG 984	G	51
HG 990	G	50
HG 992	G	51
HG 993	G	50

NI		
NI 910	G	53
NI 940	G	53
NI 941	G	52
NI 949	G	53
NI 953	G	53
NI 987	G	53
NI 997	G	53

WOOD		
------	--	--

MW		
MW 130	F G	60
MW 131	NEW	F G 56
MW 132	NEW	F G 55
MW 136	F G	60
MW 137	NEW	F G 56
MW 138	NEW	F G 56
MW 178	F G	59
MW 179	F G	59
MW 181	F G	59
MW 182	F G	63
MW 183	F G	63
MW 184	F G	63
MW 185	F G	63
MW 186	F G	58
MW 190	G	62
MW 191	F G	62
MW 192	F G	62
MW 193	F G	62

MW		
MW 195	F G	57
MW 196	F G	57
MW 197	F G	57

LW		
LW 088	NEW	F G 66
LW 089	NEW	F G 65
LW 090	NEW	F G 66
LW 091	NEW	F G 69
LW 092	NEW	F G 69
LW 093	NEW	F G 69
LW 096	F G	67
LW 097	F G	67
LW 098	F G	71
LW 099	F G	70
LW 100	F G	72
LW 101	F G	72
LW 237	F G	71
LW 238	F G	71
LW 241	F G	73
LW 242	F G	73
LW 380	G	39
LW 411	G	94
LW 414	G	94
LW 447	F G	73
LW 449	G	39
LW 450	G	39
LW 461	F G	92
LW 464	G	92
LW 478	G	72
LW 487	G	73
LW 491	G	73
LW 497	G	73
LW 498	G	72
LW 721	F G	92
LW 722	G	92
LW 723	F G	92
LW 724	F G	92
LW 748	G	94
LW 776	G	38
LW 777	G	38
LW 821	G	39

LW		
LW 822	F G	39
LW 890	G	73
LW 892	G	73
LW 893	F G	73
LW 994	G	73

WD		
WD 002	NEW	F G 79
WD 005	G	84
WD 006	NEW	F G 79
WD 008	G	85
WD 012	NEW	F G 76
WD 024	G	86
WD 029	G	80
WD 032	NEW	F G 76
WD 034	G	84
WD 035	G	86
WD 039	NEW	F G 75
WD 048	G	88
WD 049	G	88
WD 051	NEW	F G 76
WD 056	NEW	F G 77
WD 057	NEW	F G 78
WD 058	NEW	F G 79
WD 066	F G	83
WD 084	F G	84
WD 094	G	85
WD 112	F G	80
WD 114	G	81
WD 115	F G	85
WD 119	G	86
WD 121	G	83
WD 123	G	80
WD 124	F G	80
WD 126	G	89
WD 128	G	83
WD 143	G	85
WD 160	F G	80
WD 161	G	80
WD 162	G	89
WD 163	F G	83
WD 167	G	81

WD		
WD 168	G	84
WD 169	F G	86
WD 171	F G	81
WD 172	F G	83
WD 174	F G	83
WD 175	F G	89
WD 180	G	85
WD 188	F G	89
WD 189	G	89
WD 225	G	85
WD 234	F G	87
WD 235	F G	86
WD 243	F	81
WD 259	F G	89
WD 288	G	89
WD 296	F G	89
WD 300	F G	84
WD 301	F G	84
WD 302	F G	84
WD 305	F G	85
WD 306	F G	88
WD 307	F G	81
WD 311	F G	86
WD 312	G	88
WD 313	G	84
WD 315	G	89
WD 323	F G	86
WD 324	G	88
WD 325	G	84
WD 326	G	84
WD 330	G	85
WD 331	F G	83
WD 332	F G	85
WD 389	G	89
WD 506	G	88
WD 624	G	88
WD 634	G	88
WD 653	G	81
WD 664	G	88
WD 720	G	83
WD 793	G	80
WD 794	G	80

WD		
WD 800	G	80
WD 811	G	81
WD 817	F G	81
WD 818	G	85
WD 820	G	88
WD 827	G	80
WD 828	G	81
WD 902	F G	81
WD 903	G	83
WD 906	F G	83

FABRIC		
--------	--	--

FB		
FB 851	F G	92
FB 899	F G	92
FB 925	NEW	F G 91
FB 928	NEW	F G 91
FB 931	F G	93
FB 932	F G	93
FB 933	G	93

LT		
LT 708	G	94

AB		
AB 021	F G	95

PW		
PW 426	G	95
PW 436	G	95

# CONTENTS

<b>SOLID</b>	04	<b>Solid Matt</b> [SM]
	12	<b>Solid</b> [SL]
	18	<b>Premium Solid</b> [PS]
	20	<b>Solid Emboss</b> [SE]
	22	<b>Solid Design</b> [SD]
	26	<b>Matt Design</b> [MD]
<b>STONE &amp; METAL</b>	28	<b>Stone</b> [ST/LW]
	40	<b>Metal</b> [MT]
	44	<b>Metal Shiny</b> [MS]
	46	<b>Enamel High-gloss</b> [EH]
	50	<b>High-gloss</b> [HG]
	52	<b>Natural &amp; Innovative</b> [NI]
<b>WOOD</b>	54	<b>Matt Wood</b> [MW]
	64	<b>Luxury Wood</b> [LW]
	74	<b>Wood</b> [WD]
<b>FABRIC</b>	90	<b>Fabric</b> [FB/LW]
	94	<b>Leather</b> [LT/LW]
	95	<b>Abstract &amp; Paper Weave</b> [AB/PW]



*infeel*

## 01 Excellent Workability

Compared to existing surface finishes, construction is easier and the work efficiency is high, which can shorten the work schedule. It is economical in all aspects because it is easy to change and maintain as well as stick to the curved surface.

## 02 High Durability

Excellent durability keeps it the same as it first felt. Excellent numerical stability minimizes deformation due to thermal temperature and humidity. It has excellent pollution resistance, making cleaning easy.

## 03 Various Uses

From multi-use facilities such as restaurants, hotels, hospitals, and department stores to any indoor space, such as apartments, office hotels, indoor buildings, pillars, ceilings, doors, art walls, molding and partitions.

# SOLID

Solid Matt [SM]

Solid Emboss [SE]

Solid [SL]

Solid Design [SD]

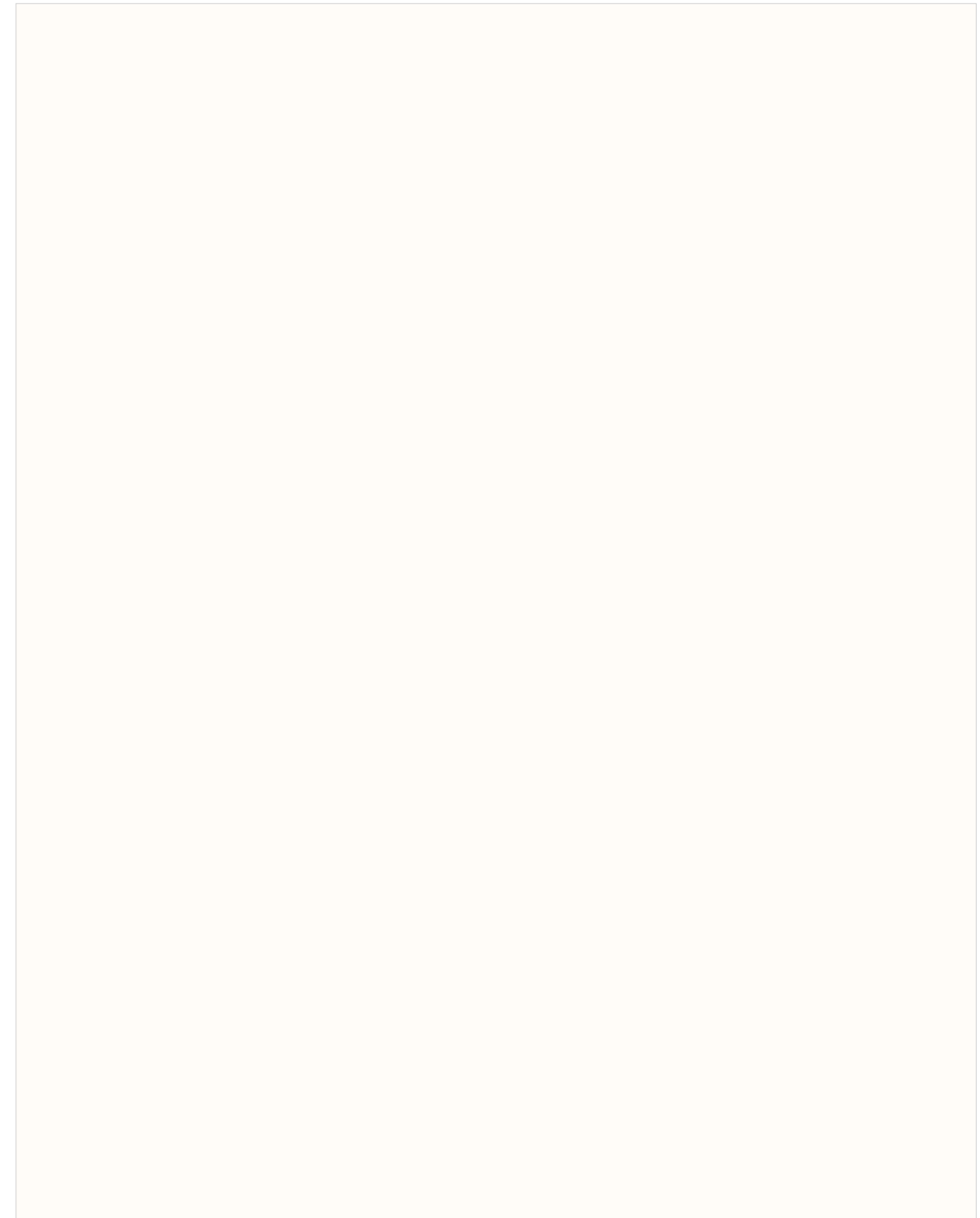
Premium Solid [PS]

Matt Design [MD]



SM 403 / SM 499

NEW New Pattern F Flame Retardant G Non-Flame Retardant



Solid Matt

NEW G SM 403

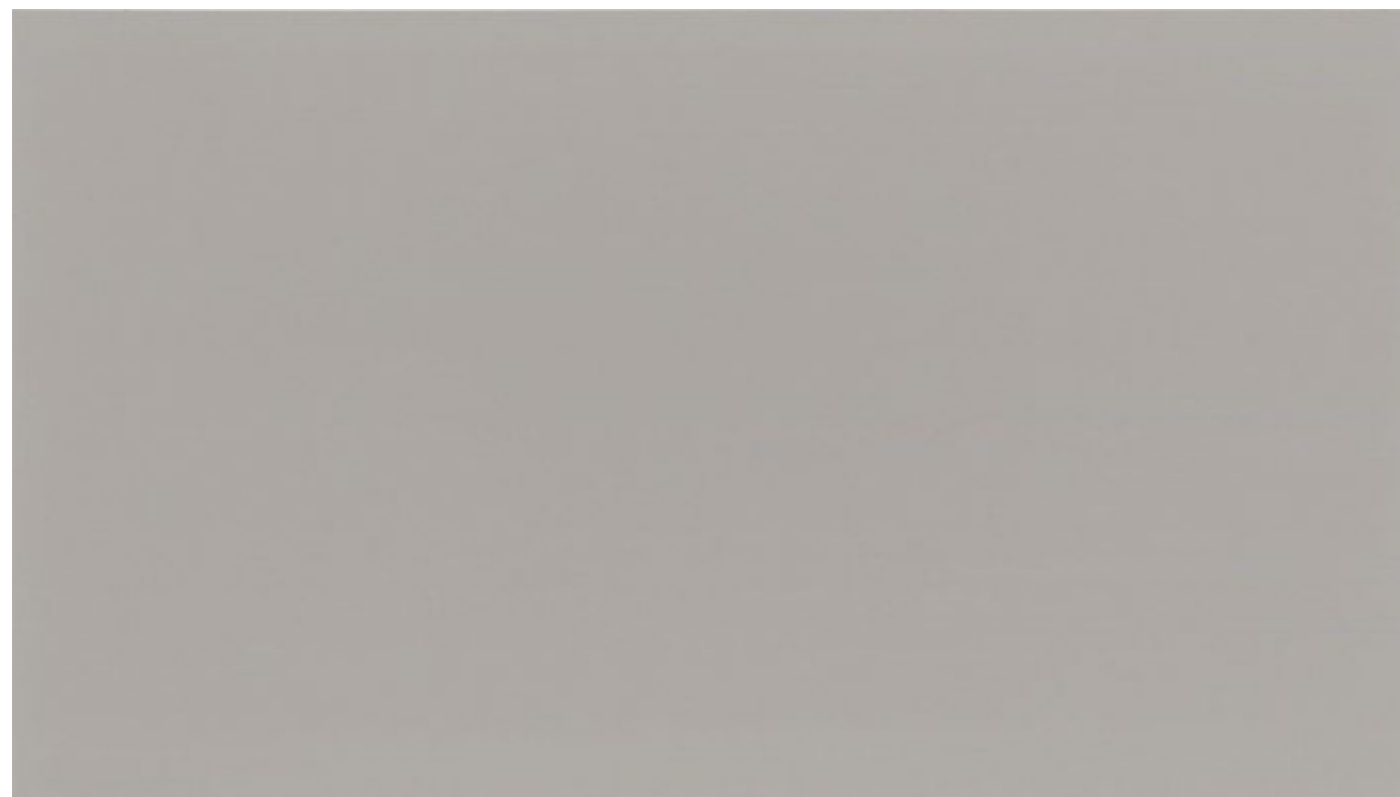
# Solid Matt

[SM]



Solid Matt

NEW G SM 592



Solid Matt

NEW G SM 499

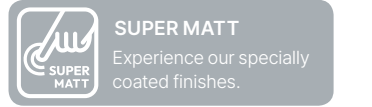


SM 592

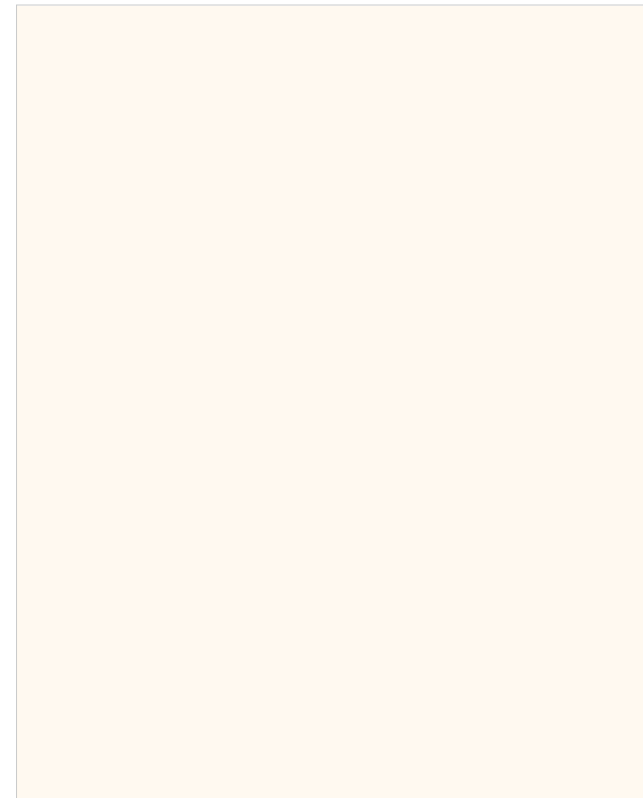
# Solid Matt

[SM]

NEW New Pattern F Flame Retardant G Non-Flame Retardant

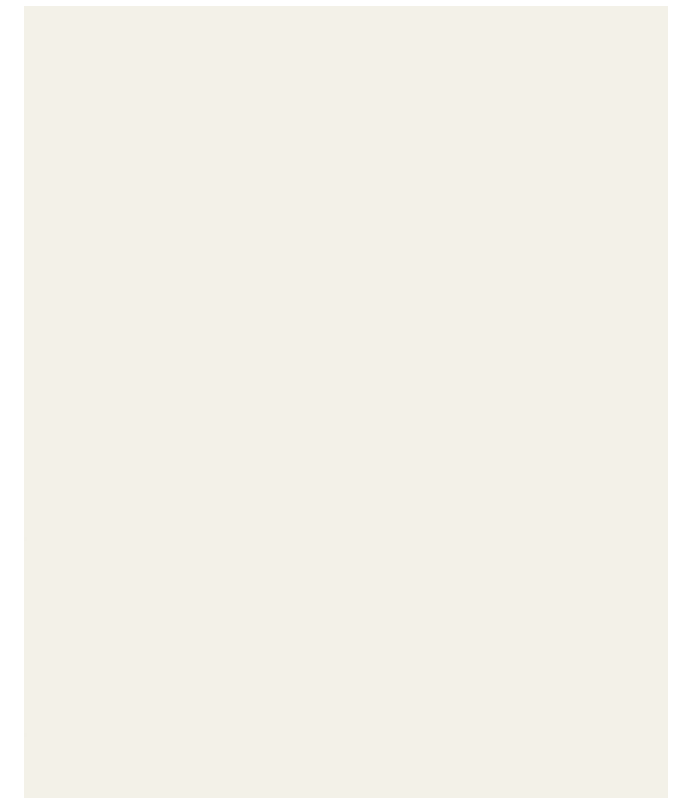


SM 604 / SM 605



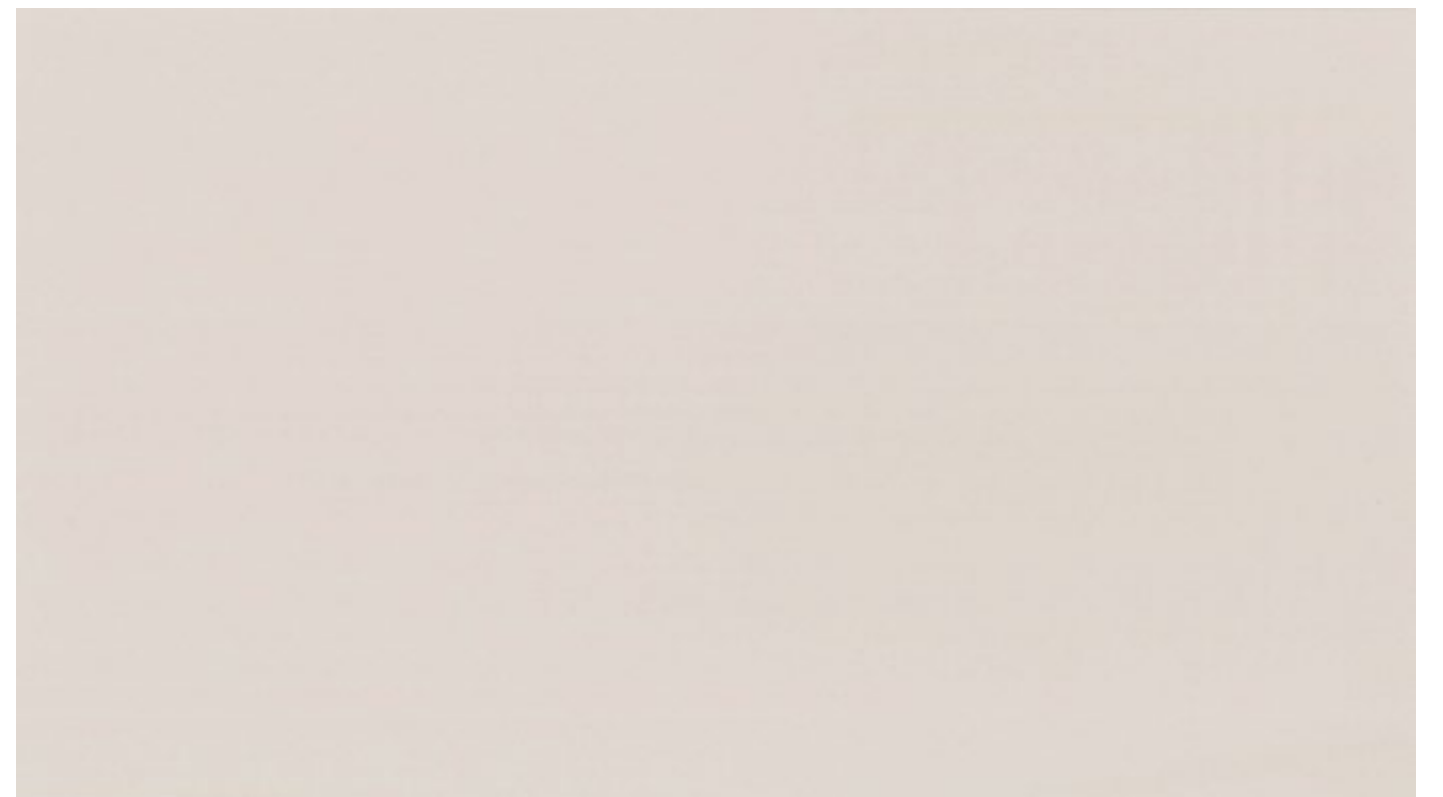
Solid Matt

NEW G SM 405



Solid Matt

NEW G SM 605



Solid Matt

NEW G SM 604

# Solid Matt

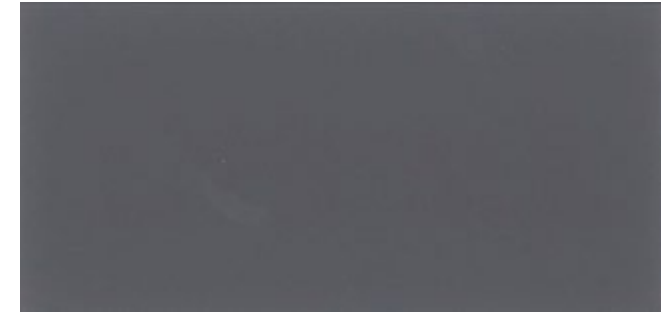
[SM]



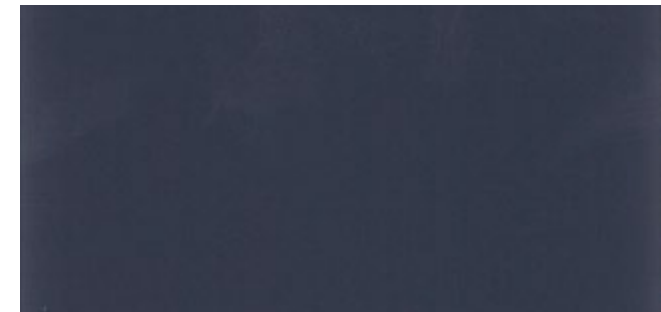
Solid Matt 🔥 🌿 SM 886



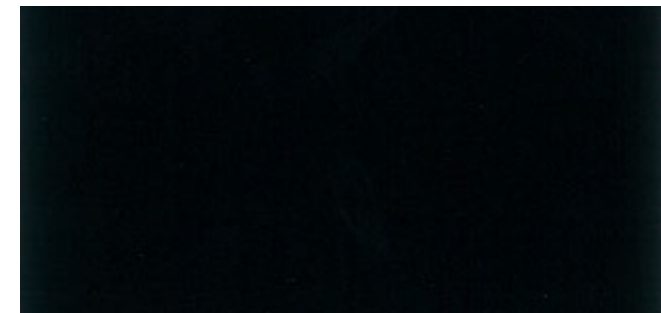
Solid Matt 🔥 🌿 SM 847



Solid Matt 🔥 🌿 SM 835



Solid Matt 🌿 SM 834



Solid Matt 🌿 SM 839



Solid Matt 🔥 🌿 SM 836



Solid Matt 🔥 🌿 SM 849



Solid Matt 🔥 🌿 SM 829

NEW New Pattern 🔥 Flame Retardant 🌿 Non-Flame Retardant



SM 845



Solid Matt 🔥 🌿 SM 843



Solid Matt 🔥 🌿 SM 845

# Solid

[SL]

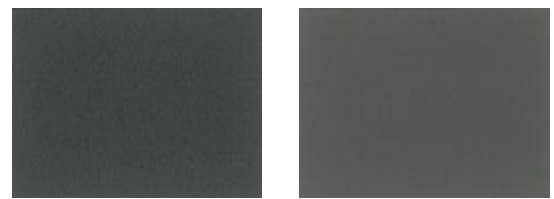


SL 262

Solid  
[SL]



SL 543



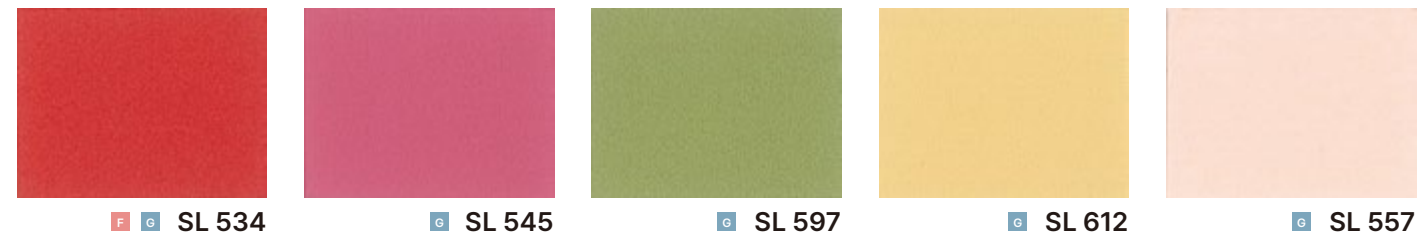
SL 543 SL 553



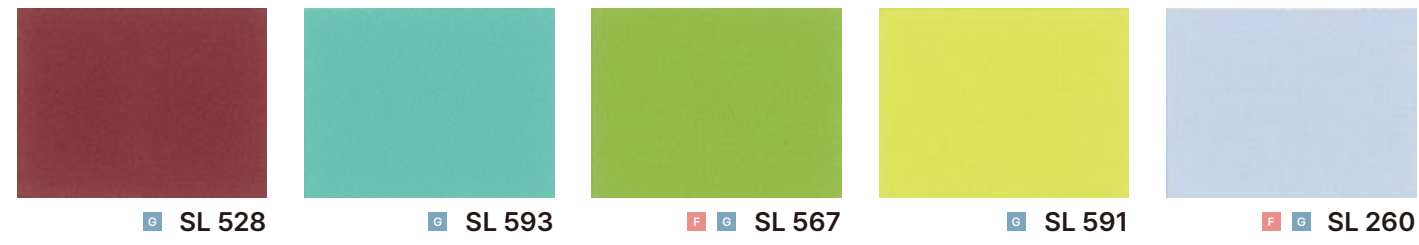
SL 522 SL 541 SL 600



SL 533 SL 532 SL 526 SL 544 SL 249



SL 534 SL 545 SL 597 SL 612 SL 557



SL 528 SL 593 SL 567 SL 591 SL 260



SL 565 SL 570 SL 568 SL 547 SL 614



SL 579 SL 566 SL 524 SL 549 SL 588



SL 587 SL 596 SL 558 SL 609 SL 564



SL 669 SL 521 SL 666 SL 516 SL 610



SL 261 SL 265 SL 665 SL 515 SL 589



SL 523 SL 257 SL 262 SL 529 SL 500



SL 599 SL 598 SL 527 SL 611 SL 585



SL 584 SL 519 SL 613 SL 548 SL 551



SL 542 SL 530 SL 539 SL 616 SL 273

# Solid

[SL]



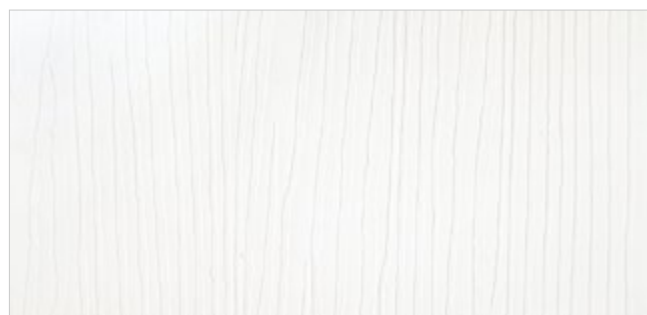
Solid F G SL 581



Solid F G SL 513



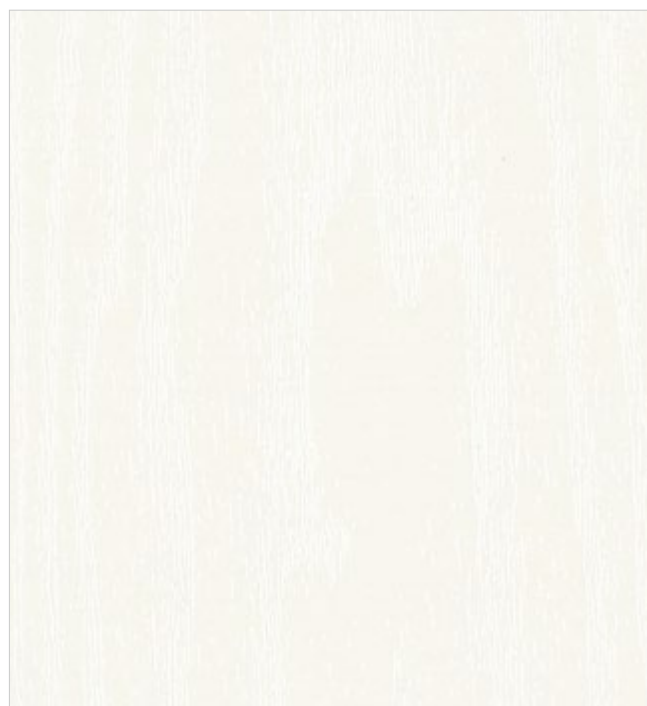
Solid G SL 595



Solid G SL 554



Solid G SL 571



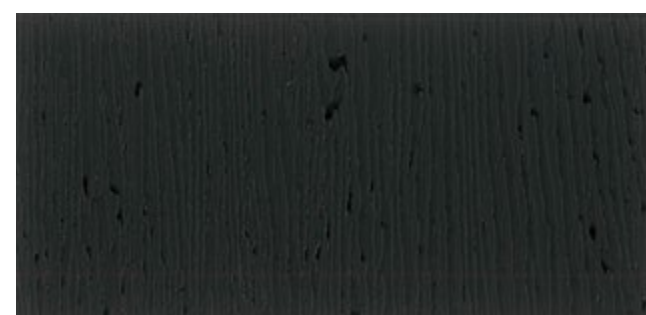
Solid F G SL 560



SL 514



Solid G SL 514



Solid G SL 582



Solid F G SL 559

# Premium Solid

[PS]

NEW New Pattern **F** Flame Retardant **G** Non-Flame Retardant



PS 107



Premium Solid

**F** **G** PS 104



Premium Solid

**G** PS 108



Premium Solid

**F** **G** PS 103



Premium Solid

**F** **G** PS 107



Premium Solid

**F** **G** PS 106



Premium Solid

**F** **G** PS 109

# Solid Emboss

[SE]

NEW New Pattern F Flame Retardant G Non-Flame Retardant



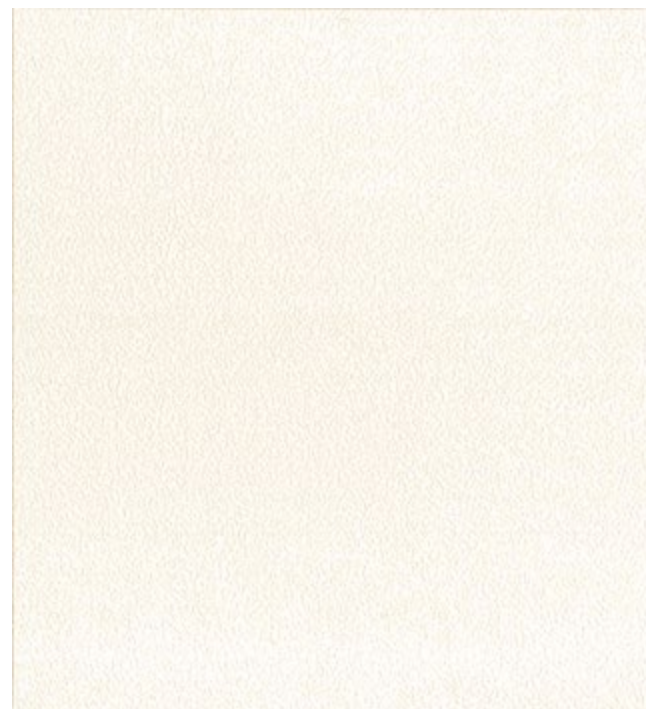
SE 269



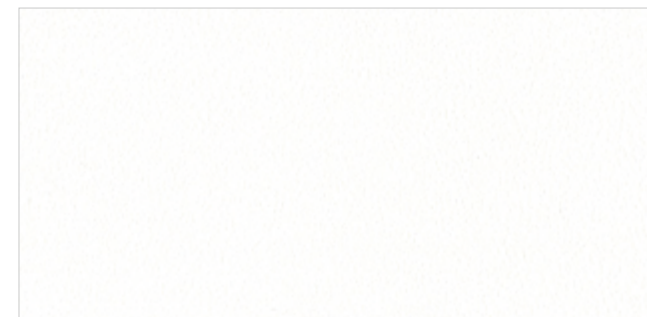
SE 637



Solid Emboss NEW F G SE 268



Solid Emboss NEW F G SE 269



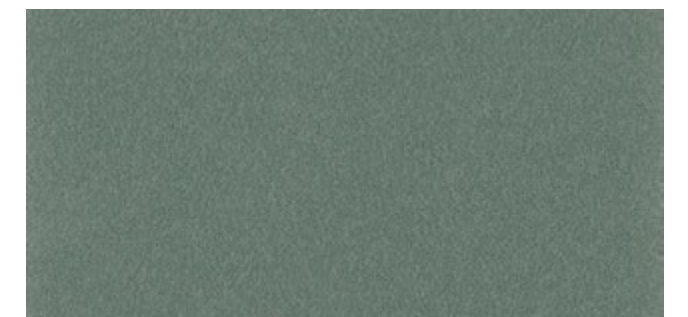
Solid Emboss F G SE 281



Solid Emboss F G SE 297



Solid Emboss F G SE 291



Solid Emboss G SE 637



SD 710



Solid Design

NEW F G SD 894



Solid Design

NEW F G SD 889



Solid Design

NEW F G SD 710



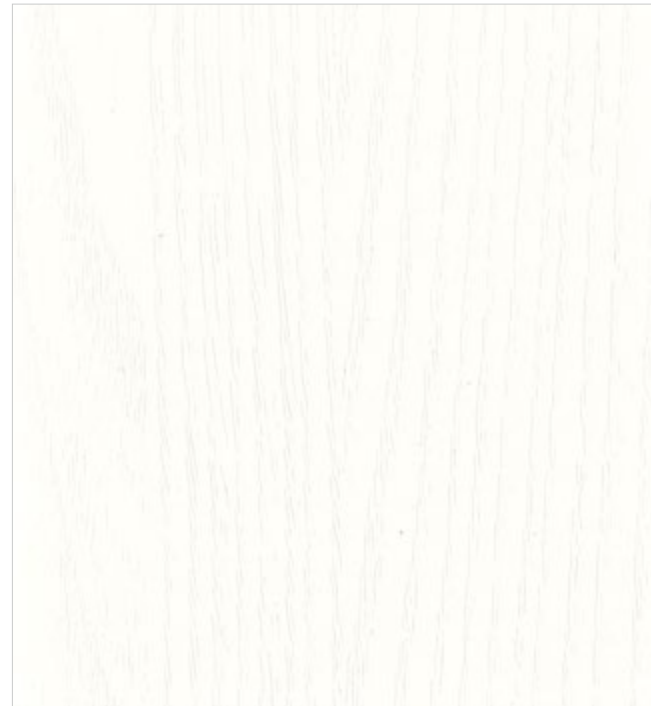
Solid Design

NEW F G SD 753

# Solid Design

[SD]

NEW New Pattern F Flame Retardant G Non-Flame Retardant



Solid Design F G SD 840



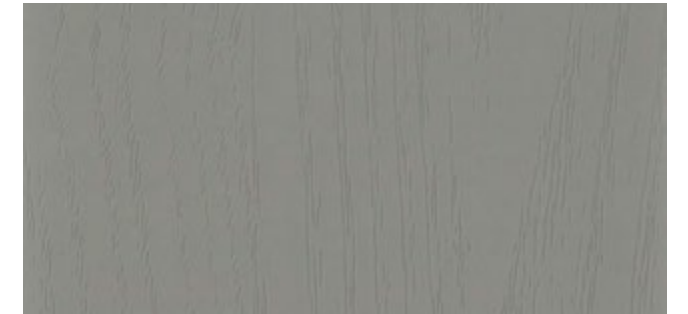
Solid Design F G SD 864



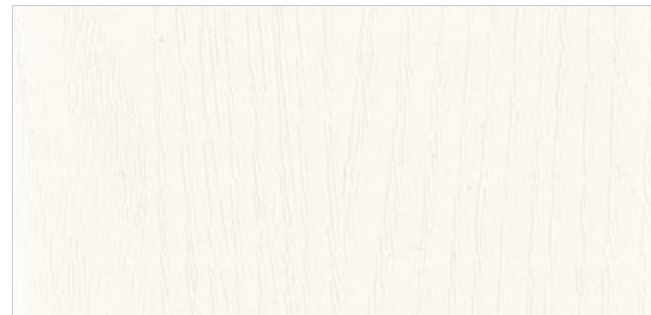
Solid Design G SD 858



Solid Design F G SD 848



Solid Design F G SD 853



Solid Design F G SD 844



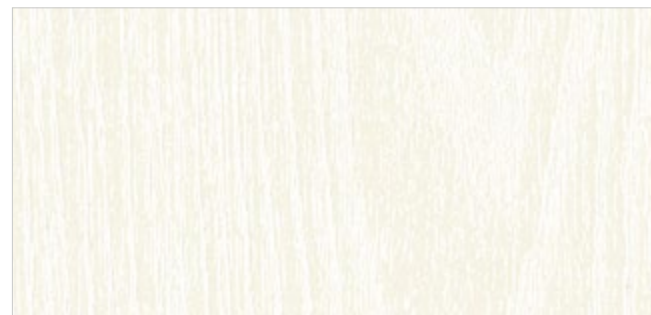
Solid Design F G SD 846



Solid Design G SD 865



Solid Design F G SD 866



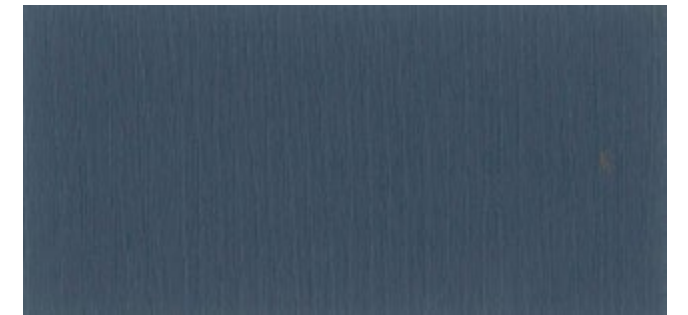
Solid Design F G SD 842



Solid Design NEW F G SD 914



Solid Design G SD 852



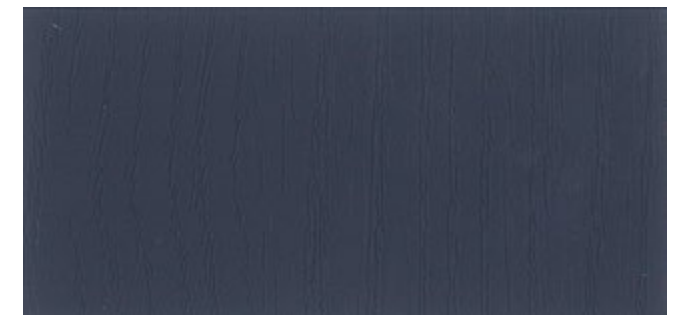
Solid Design G SD 856



Solid Design G SD 854



Solid Design F G SD 870



Solid Design F G SD 863



Solid Design G SD 850



Solid Design F G SD 841

# Matt Design

[MD]

NEW New Pattern F Flame Retardant G Non-Flame Retardant



MD 975



Matt Design

G MD 970



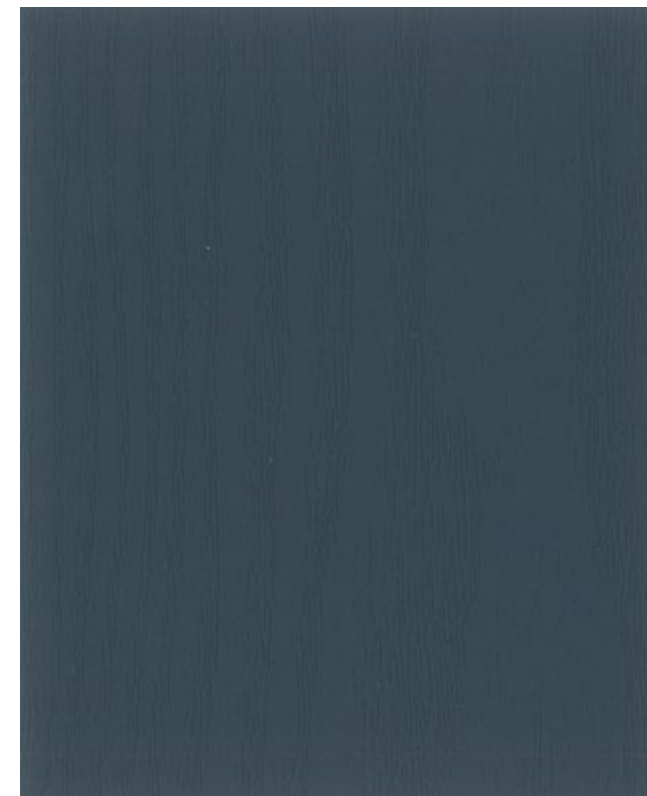
Matt Design

G MD 974



Matt Design

G MD 975



Matt Design

G MD 424



Matt Design

F G MD 976

# STONE & METAL

Stone [ST/LW]

Enamel High-gloss [EH]

Metal [MT]

High-gloss [HG]

Metal Shiny [MS]

Natural & Innovative [NI]



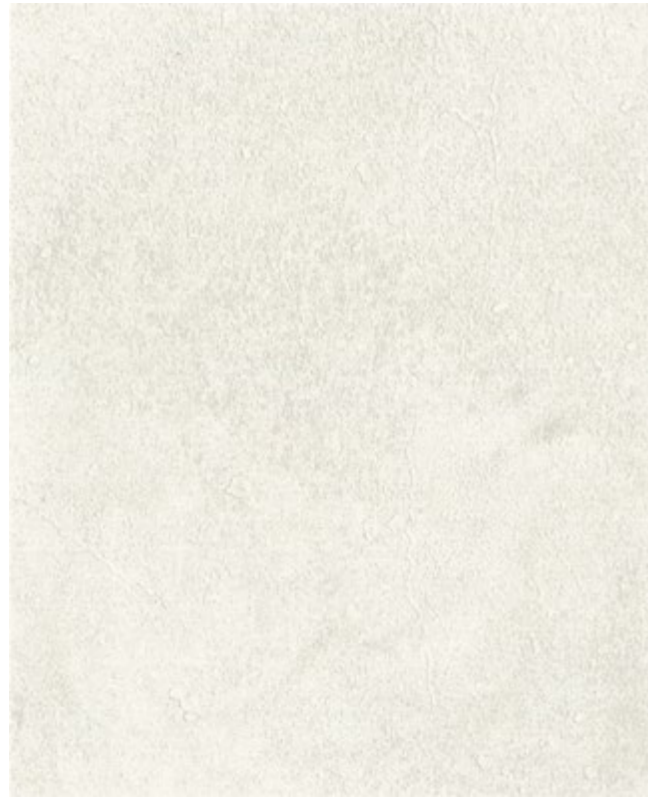
ST 392



Stone

# Stone

[ST]



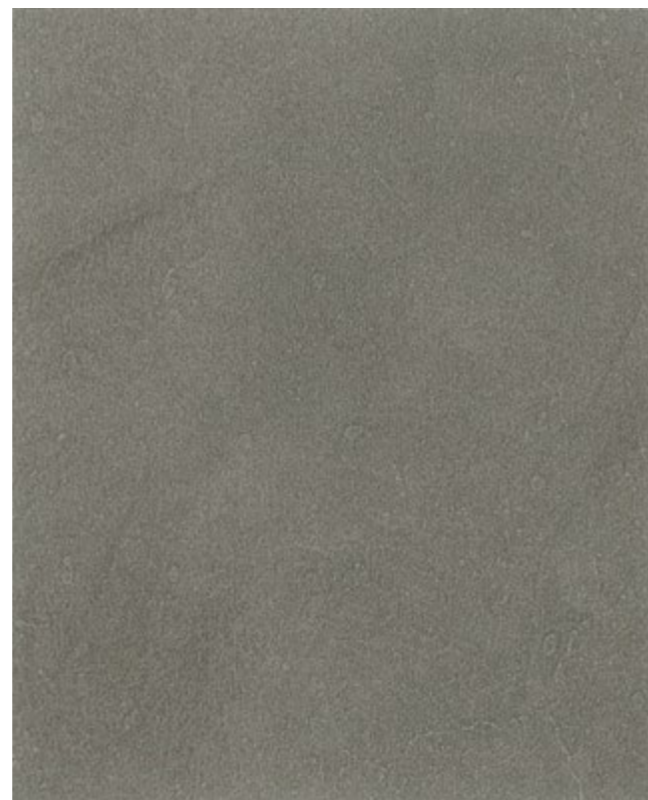
Stone F G ST 343



Stone F G ST 342



Stone F G ST 346



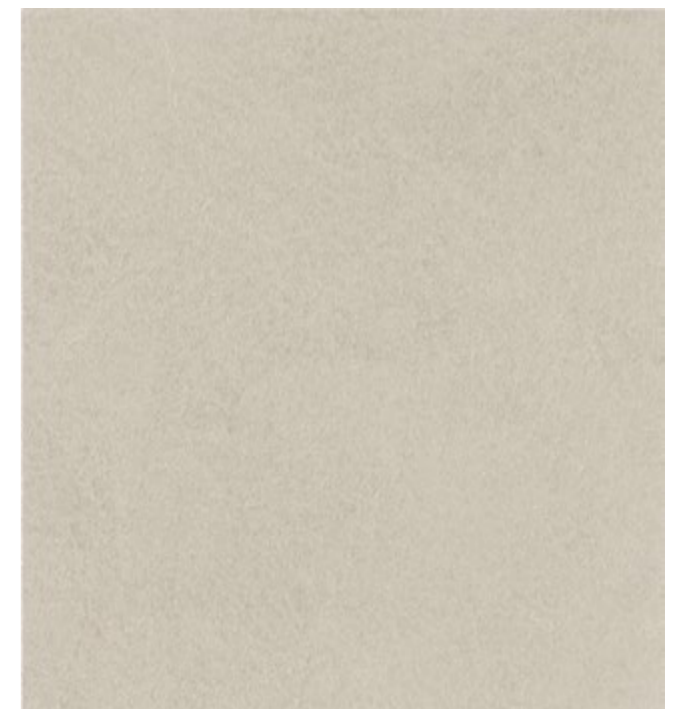
Stone F G ST 349



ST 393



Stone NEW F G ST 393



Stone NEW F G ST 394

# Stone

[ST]

NEW New Pattern F Flame Retardant G Non-Flame Retardant

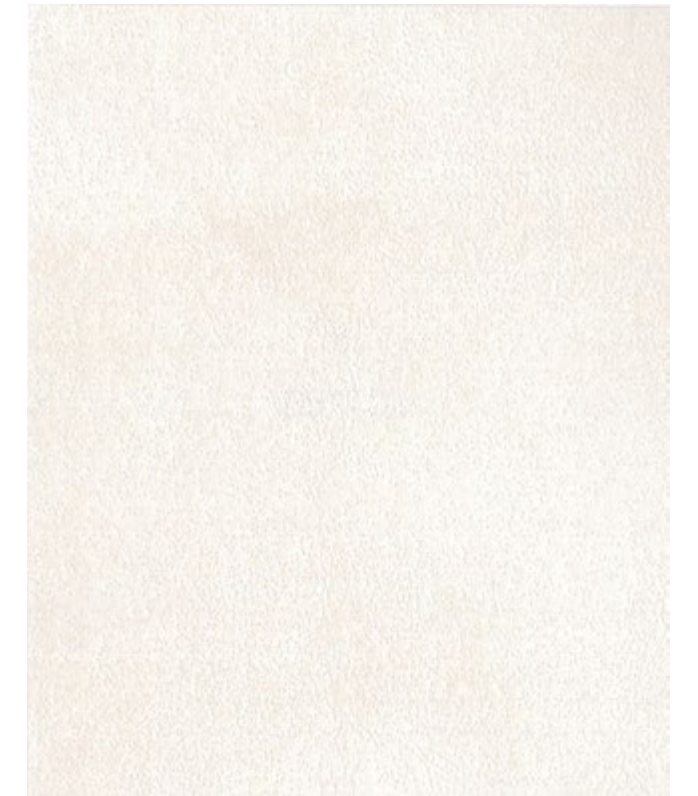


ST 382



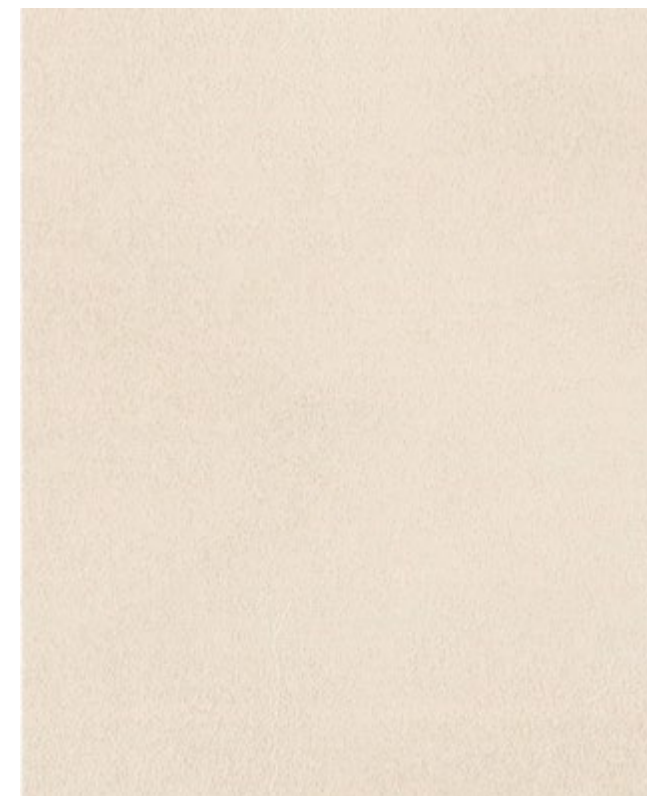
Stone

NEW F G ST 369



Stone

NEW F G ST 388



Stone

NEW F G ST 382



Stone

NEW F G ST 386

Stone  
[ST]

NEW New Pattern F Flame Retardant G Non-Flame Retardant



ST 319



Stone

NEW F G ST 316



Stone

NEW F G ST 319



Stone

NEW F G ST 358

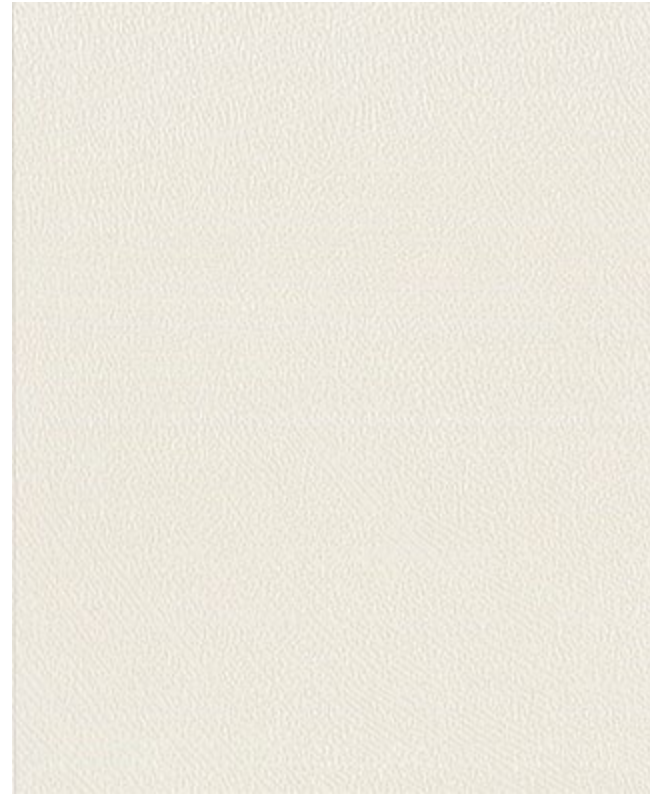
# Stone

[ST]



Stone

NEW F G ST 304



Stone

NEW F G ST 310



Stone

NEW F G ST 361



ST 310

# Stone

[ST/LW]

NEW New Pattern F Flame Retardant G Non-Flame Retardant



Stone F G ST 341



Concrete G LW 776



Stone G ST 935



Concrete G LW 449



Stone F G ST 340



Concrete G LW 777



Stripe Stone G ST 974



Concrete G LW 821



Stone F G ST 118



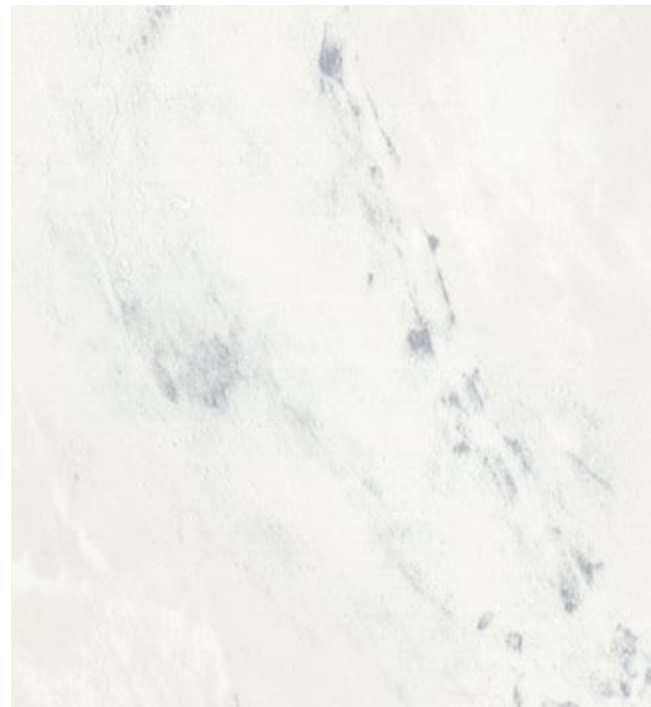
Stone F G ST 656



Stone F G ST 640



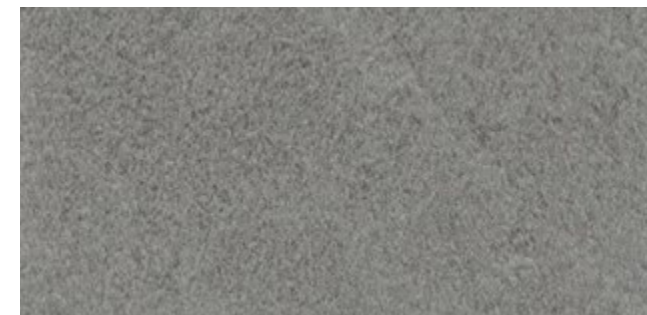
Concrete G LW 450



Stone F G ST 110



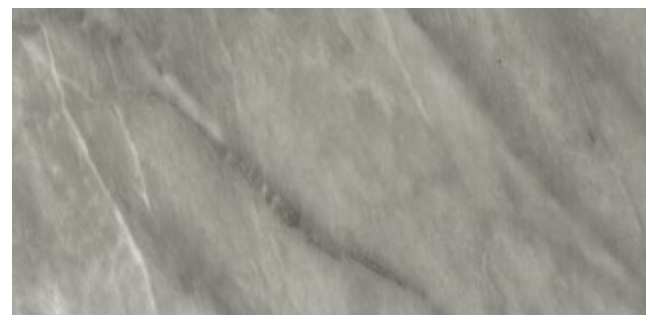
Stone F G ST 648



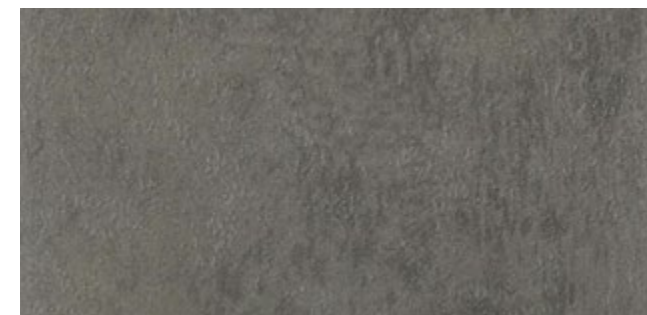
Stone F G ST 645



Brick G LW 380



Stone F G ST 111



Concrete F G LW 822

# Metal

[MT]

NEW New Pattern F Flame Retardant G Non-Flame Retardant



MT 782



Metal

G MT 725



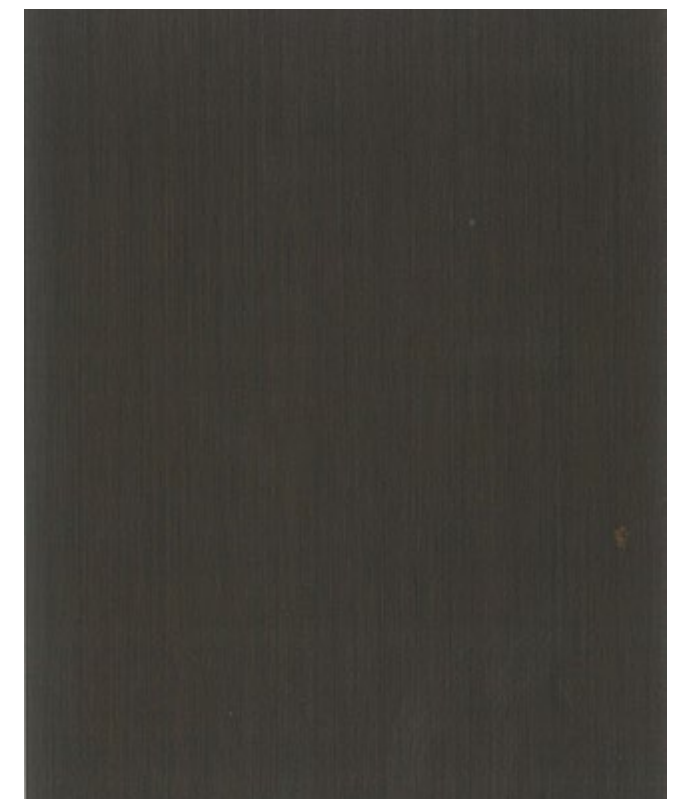
Metal

G MT 726



Metal

G MT 762



Metal

G MT 782

# Metal

[MT]

NEW New Pattern F Flame Retardant G Non-Flame Retardant



Metal F G MT 236



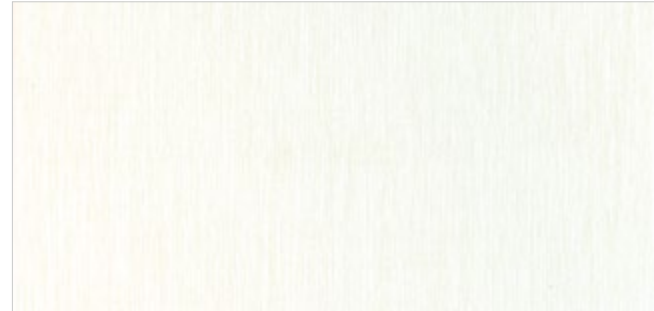
Metal F G MT 229



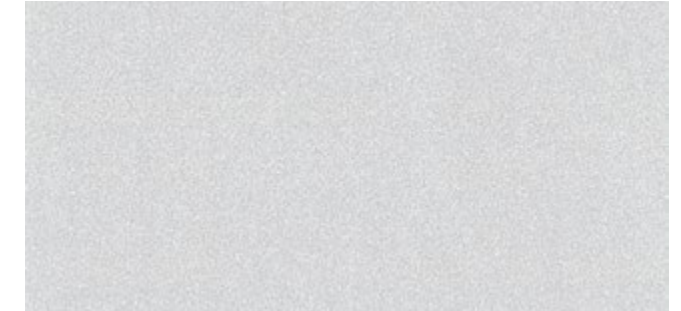
Metal F G MT 209



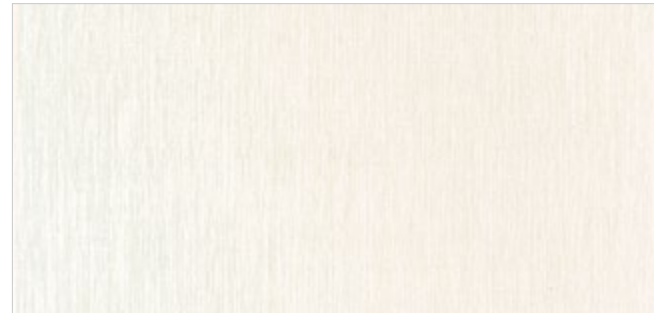
Metal G MT 745



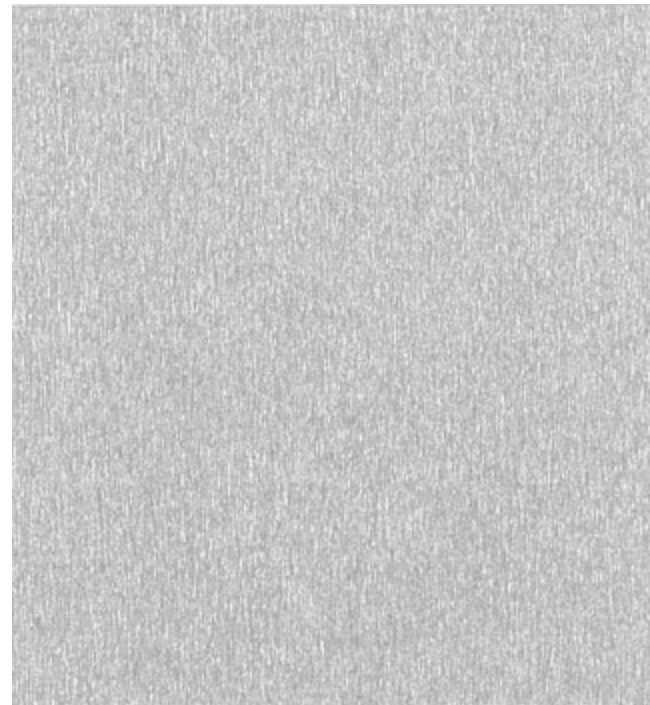
Metal F G MT 213



Metal G MT 230



Metal F G MT 216



Metal G MT 741



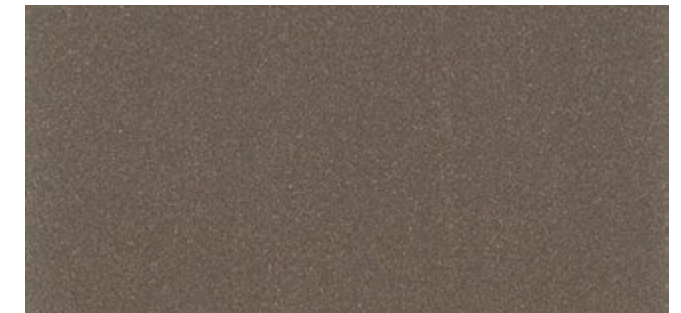
Metal F G MT 210



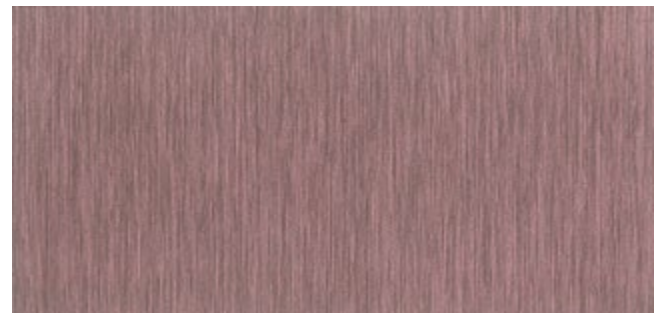
Metal F G MT 231



Metal F G MT 218



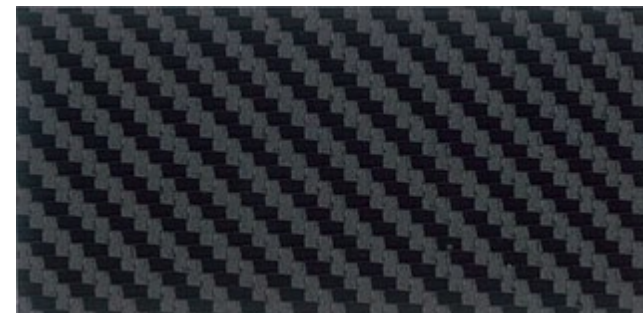
Metal F G MT 232



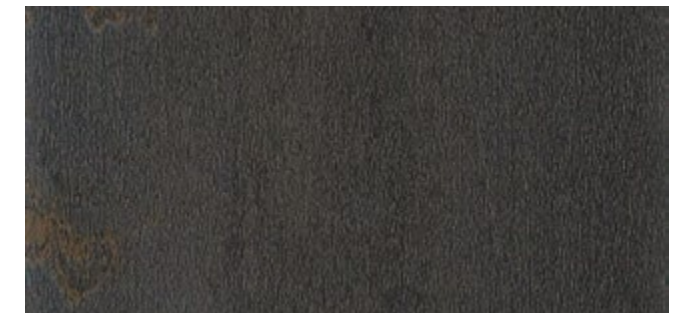
Metal F G MT 227



Metal G MT 746



Metal G MT 747



Metal F G MT 662

# Metal Shiny

[MS]

NEW New Pattern F Flame Retardant G Non-Flame Retardant



MS 737



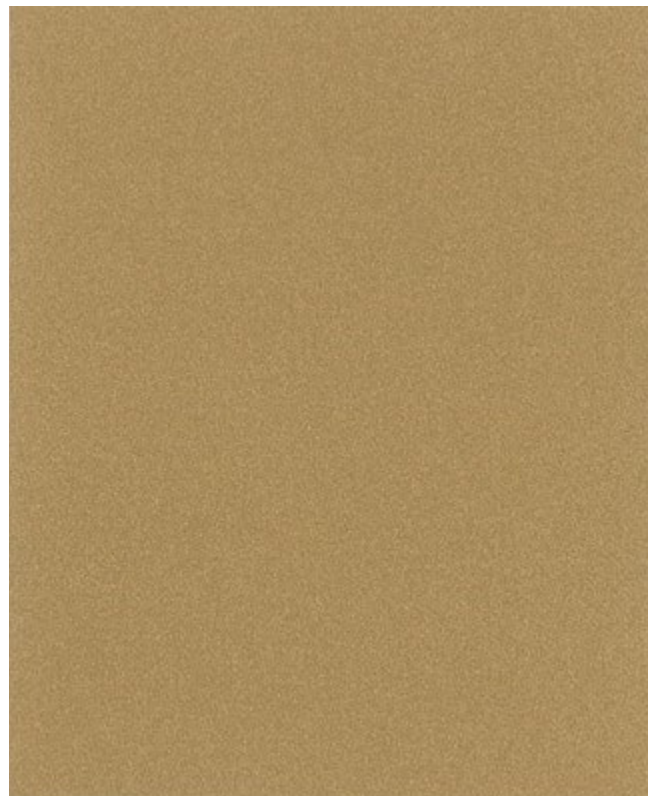
Metal Shiny

F G MS 738



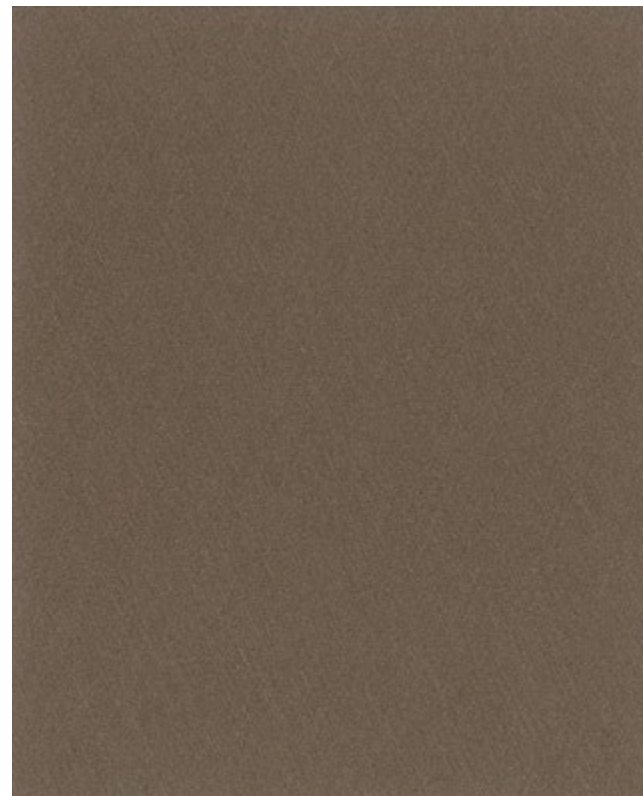
Metal Shiny

G MS 733



Metal Shiny

G MS 717



Metal Shiny

G MS 712



Metal Shiny

G MS 737

# Enamel High-gloss

[EH]

NEW New Pattern F Flame Retardant G Non-Flame Retardant



EH 133



Marble

G EH 148



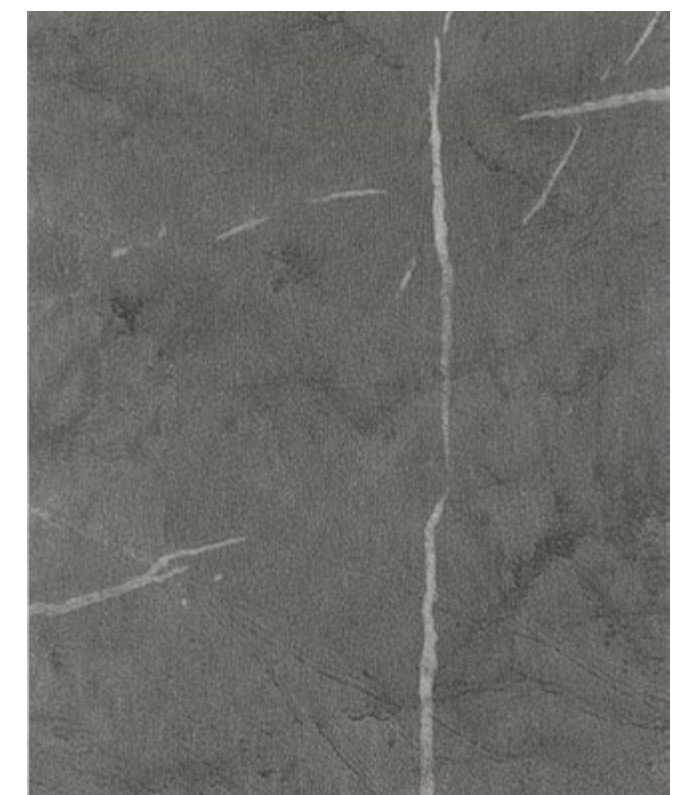
Marble

G EH 150



Blanca

F G EH 133



Nero

F G EH 134

# Enamel High-gloss

[EH]

NEW New Pattern F Flame Retardant G Non-Flame Retardant



Big Marble F G EH 158



Big Marble G EH 159



Marble G EH 147



Marble G EH 139



Marble G EH 152



Marble F G EH 153



Marble G EH 140

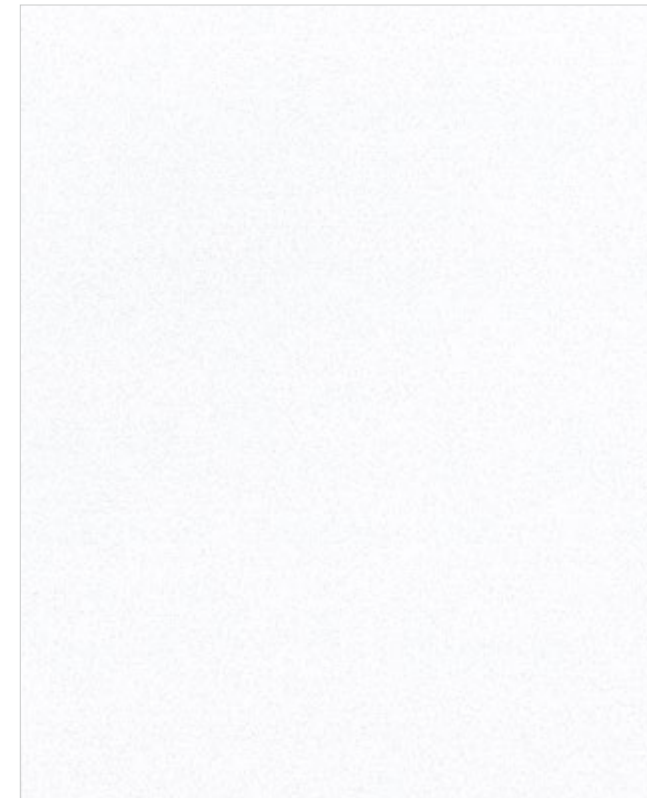
# High-gloss

[HG]

NEW New Pattern F Flame Retardant G Non-Flame Retardant



HG 993



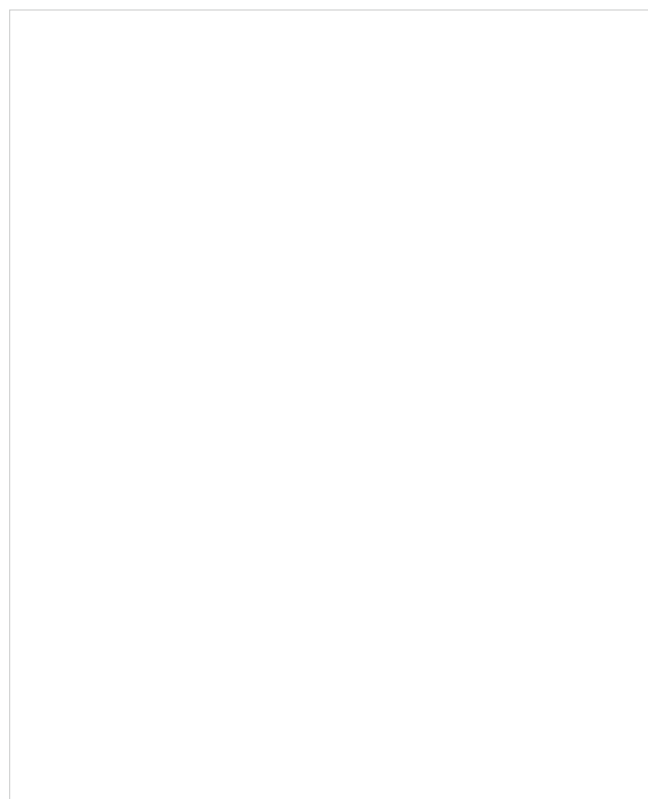
High-gloss

G HG 980



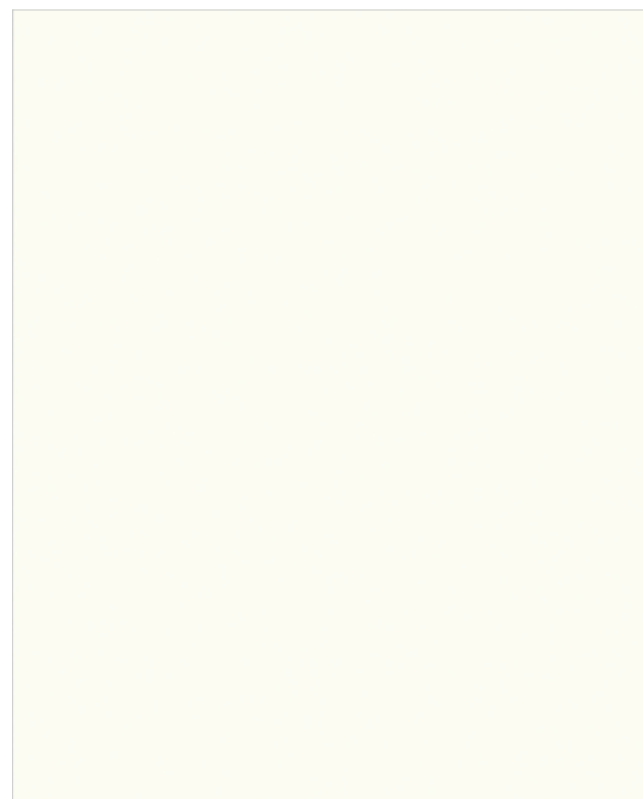
High-gloss

G HG 978



High-gloss

G HG 990



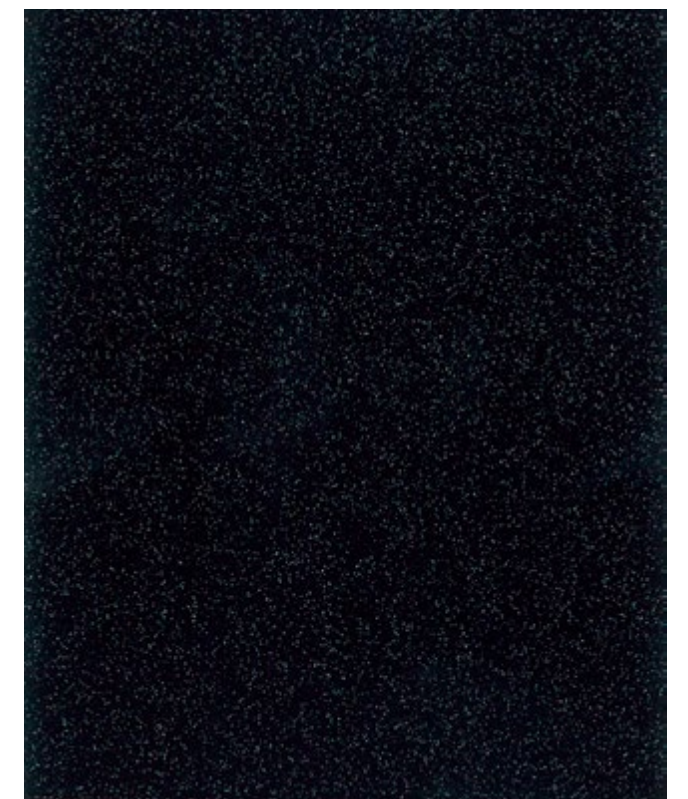
High-gloss

G HG 993



High-gloss

G HG 992



High-gloss

G HG 984

# Natural & Innovative

[NI]



NI 987



Lime Gold

NI 941



Lime Silver

NI 940



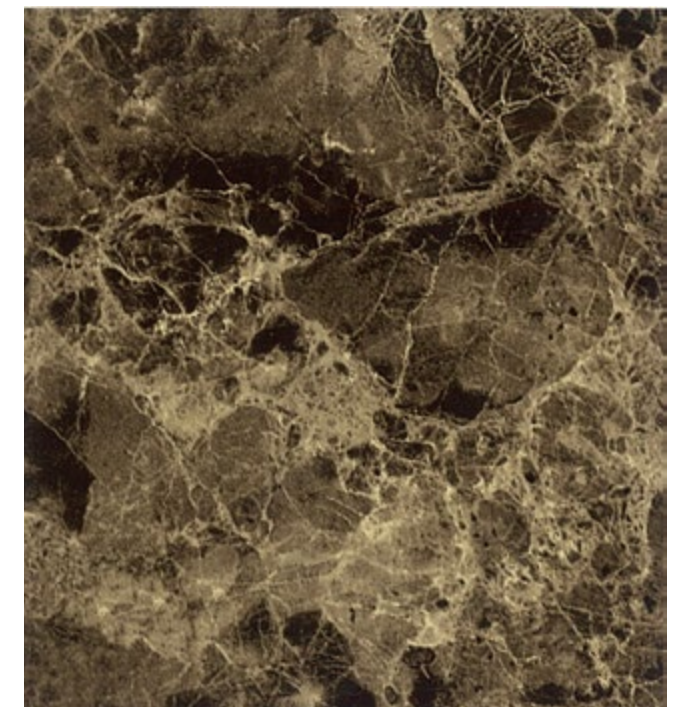
Marble

NI 987



Linearity Gold

NI 997



Maron Emperador

NI 949



Red Gold

NI 910



Nero Marquina

NI 953

NEW New Pattern F Flame Retardant G Non-Flame Retardant

# WOOD

Matt Wood [MW]

Luxury Wood [LW]

Wood [WD]



MW 132



Ash

# Matt Wood

[MW]



Ash NEW F G **MW 138**



Ash NEW F G **MW 137**



Ash NEW F G **MW 131**



Standard Oak F G **MW 195**



Standard Oak F G **MW 196**



Standard Oak F G **MW 197**

# Matt Wood

[MW]



MW 186



Oak

F G MW 178



Oak

F G MW 179



Ash

F G MW 186



Ash

F G MW 181

# Matt Wood

[MW]



Walnut

**F** **G** MW 130



Walnut

**F** **G** MW 136



MW 130

# Matt Wood

[MW]



Oak **F G** MW 192



Classic Oak **G** MW 190



Oak **F G** MW 184



Oak **F G** MW 185



Classic Oak **F G** MW 191



Oak **F G** MW 193



Standard Oak **F G** MW 182



Standard Oak **F G** MW 183

# Luxury Wood

[LW]



LW 089



Oak

NEW F G LW 089



Oak NEW F G LW 088



Oak F G LW 096



Oak NEW F G LW 090



Oak F G LW 097



LW 093



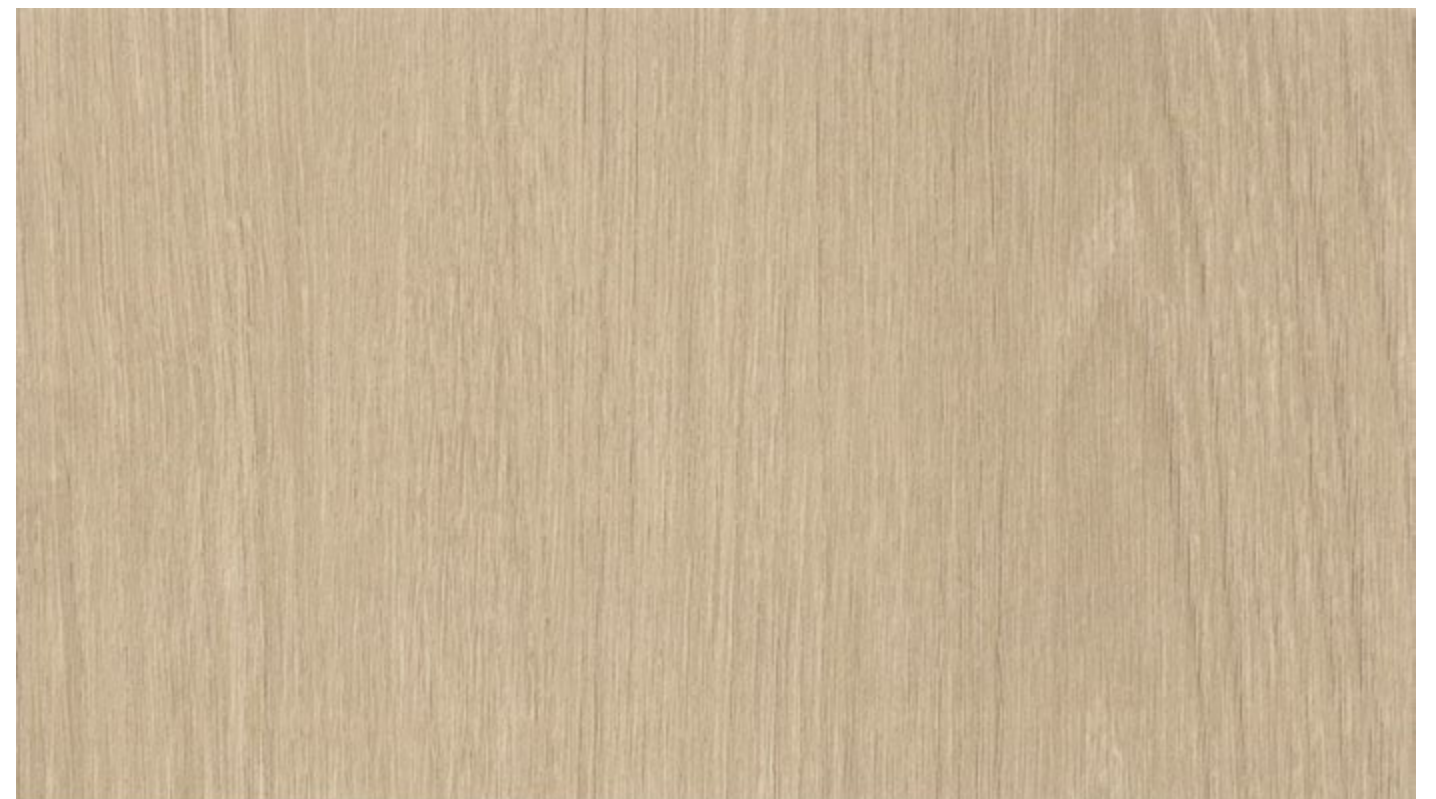
Oak

NEW F G LW 092



Oak

NEW F G LW 093



Oak

NEW F G LW 091

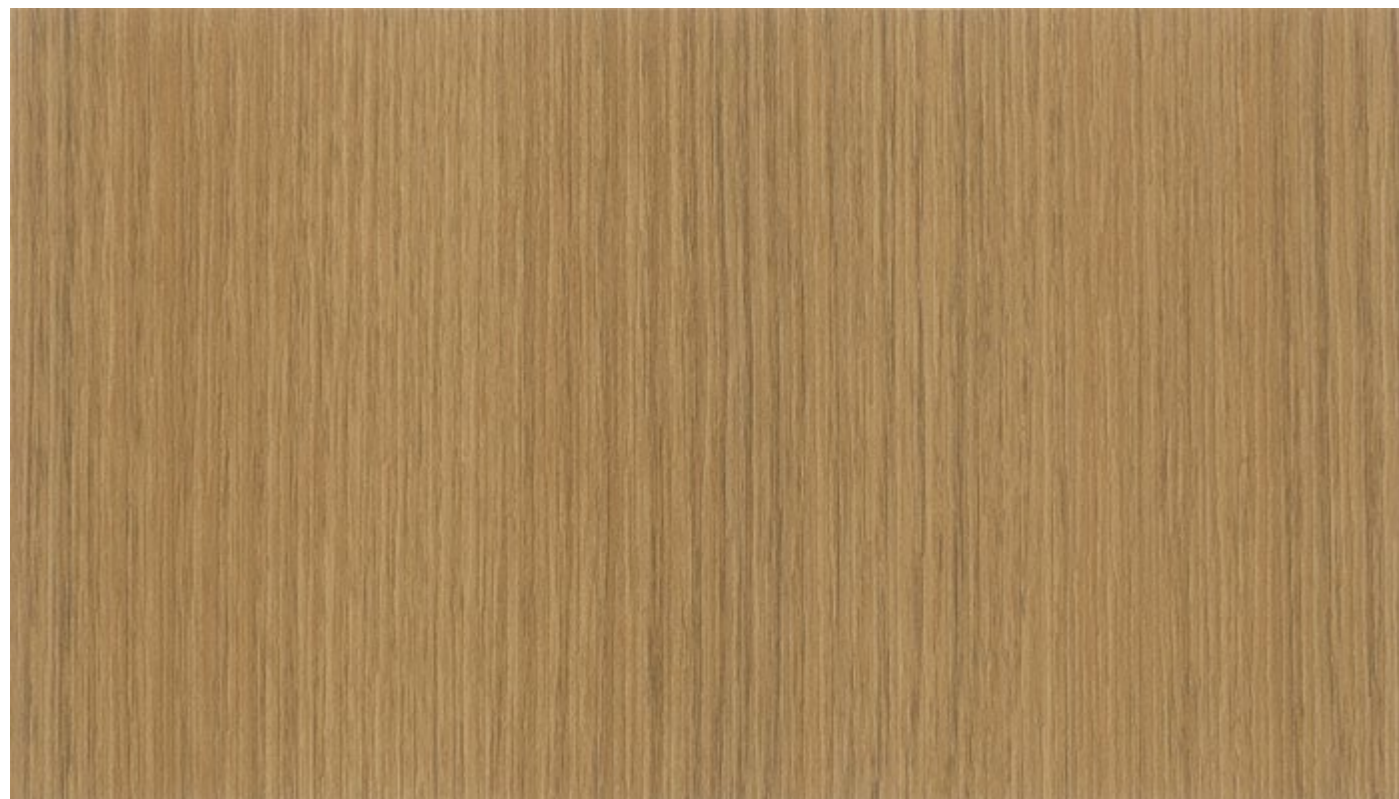


LW 099



Ash

LW 238



Elm

LW 099



Elm

LW 098



Ash

LW 237

# Luxury Wood

[LW]



Oak **F G** LW 100



Oak **F G** LW 101



Vintage Panel **G** LW 478



Artificial Wood **G** LW 498



Pearl Wood **F G** LW 447



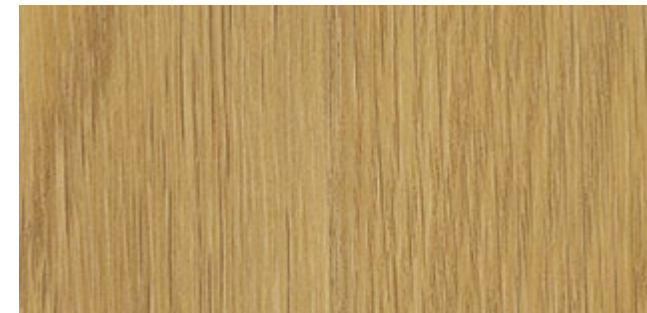
Artificial Wood **G** LW 497



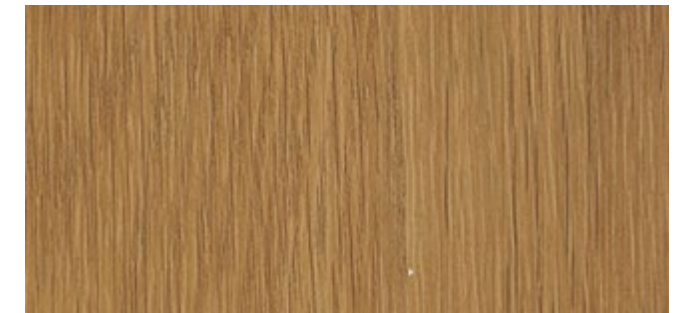
Oak **G** LW 491



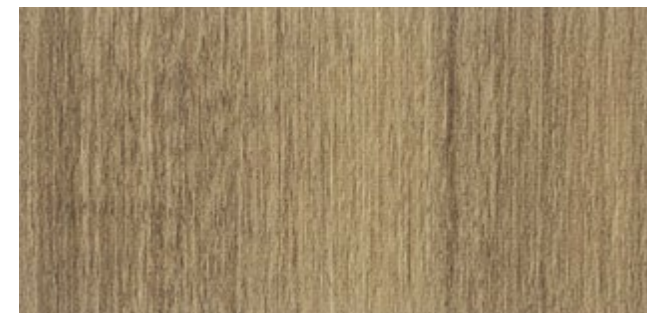
Teak **G** LW 487



Walnut **F G** LW 241



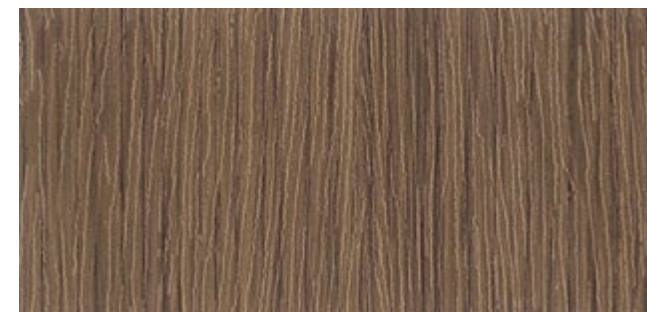
Walnut **F G** LW 242



Antique **G** LW 892



Antique **F G** LW 893



Luxury Wood **G** LW 994



Maze **G** LW 890



WD 039



Oak

NEW F G WD 039

# Wood

[WD]



Oak

NEW F G WD 012



Oak

NEW F G WD 032



Oak

NEW F G WD 051



WD 056



Oak

NEW F G WD 056

# Wood

[WD]

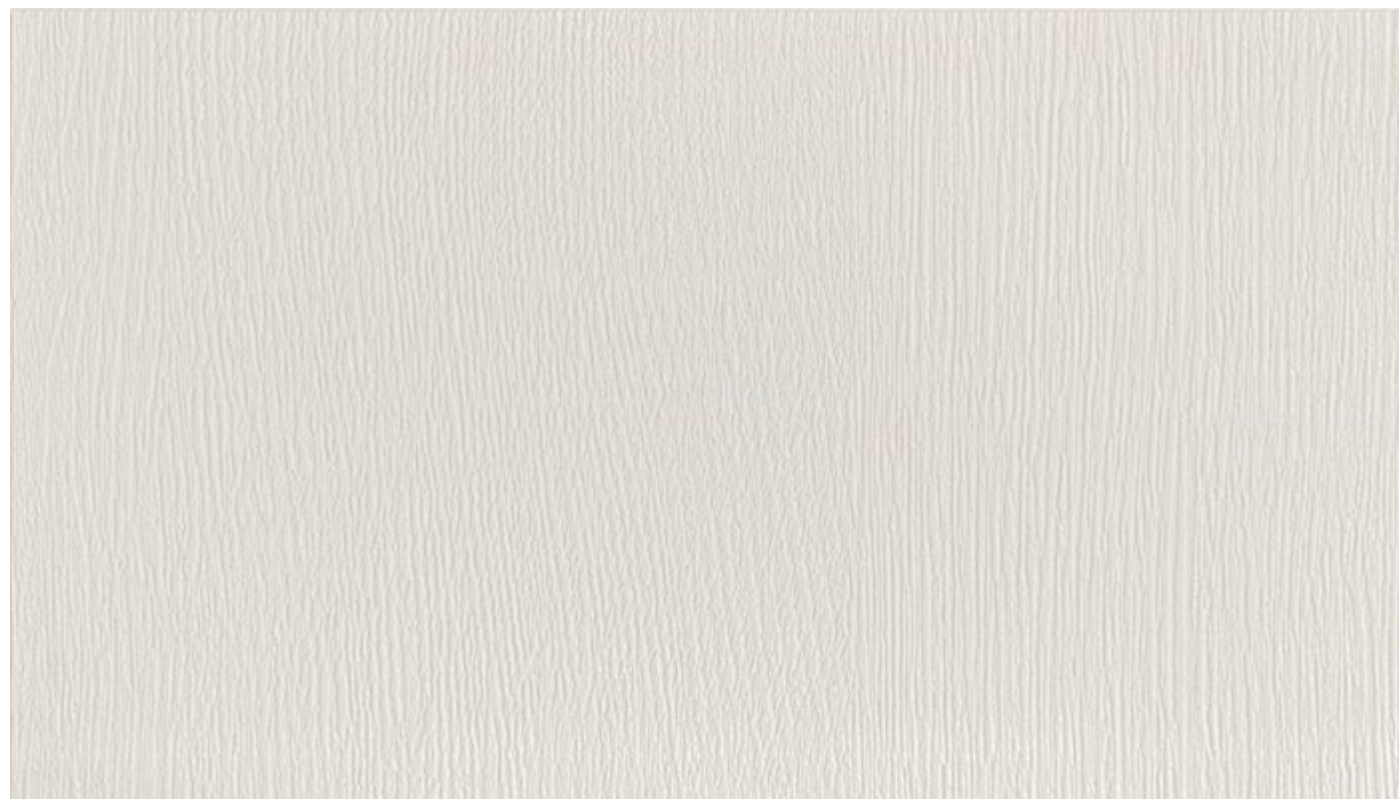


WD 002



Oak

NEW F G WD 002



Oak

NEW F G WD 057



Oak

NEW F G WD 058



Oak

NEW F G WD 006

# Wood

[WD]



Elm WD 029



White Ash WD 160



Birch WD 243



Oak WD 114



Antique WD 827



Birch WD 793



Ash WD 811



Oak WD 817



Spruce WD 124



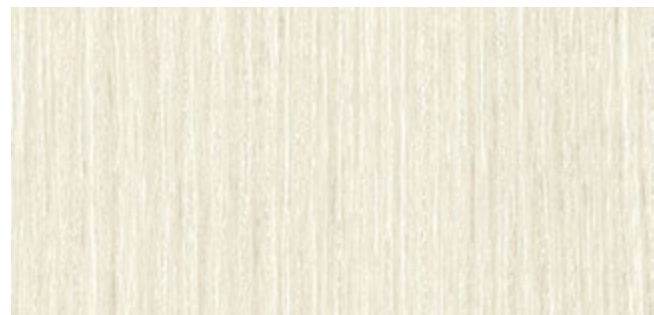
Ash WD 800



Oak WD 171



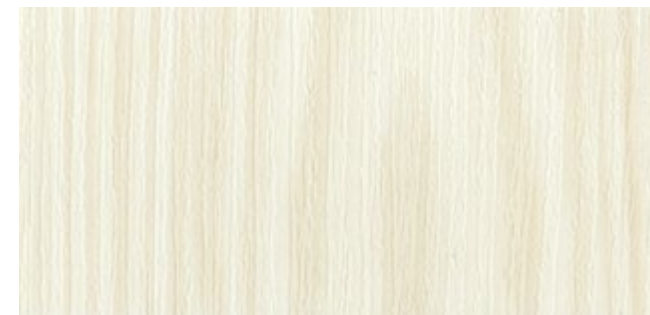
Oak WD 167



Cream Pearl WD 112



Birch WD 794



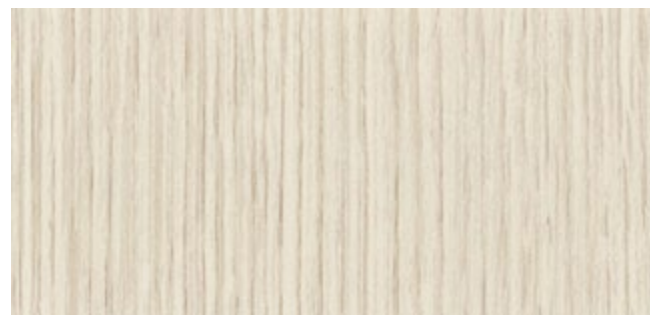
Antique WD 828



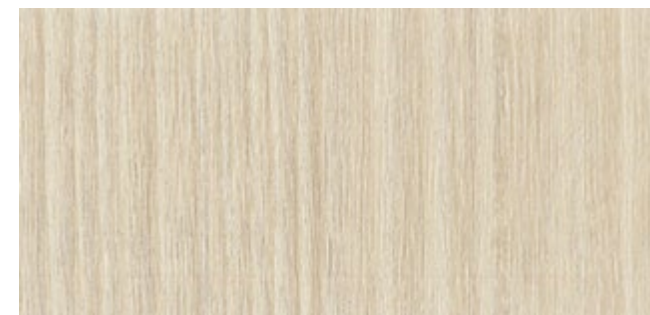
Oak WD 653



Oak WD 161



Ivy WD 123



Anigre WD 307



Pine WD 902

**Wood**  
[WD]



WD 720



Real Panel Oak **WD 174**



Pine **WD 903**



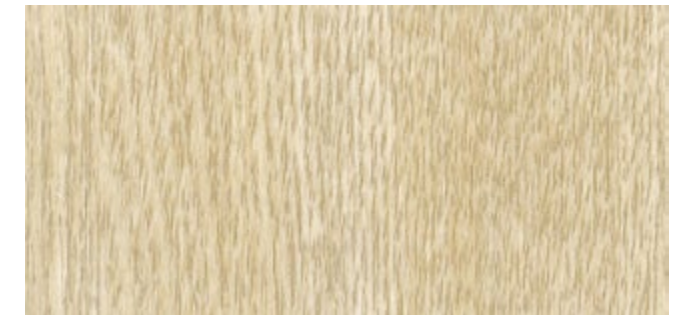
French Oak **WD 128**



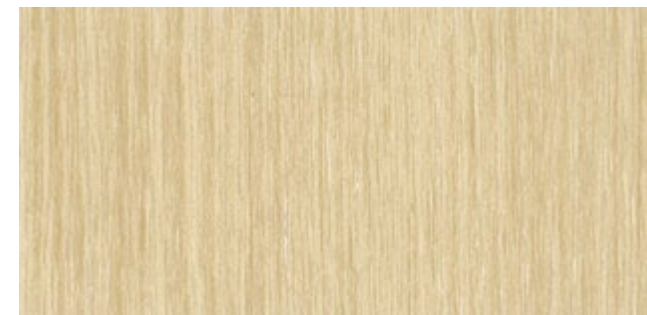
Oak **WD 331**



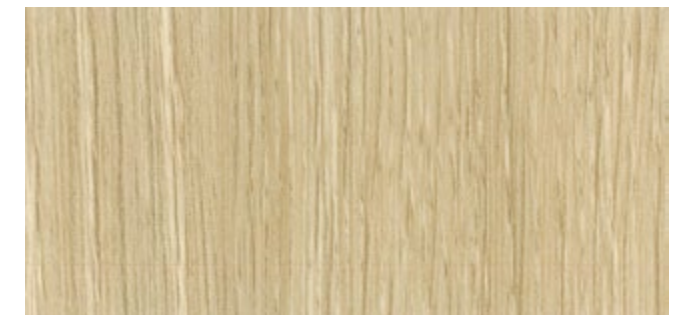
Oak **WD 172**



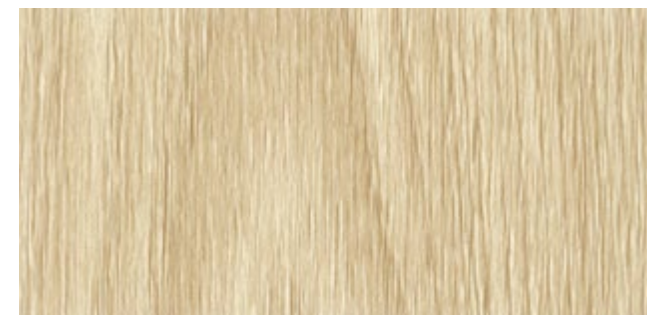
Ash **WD 121**



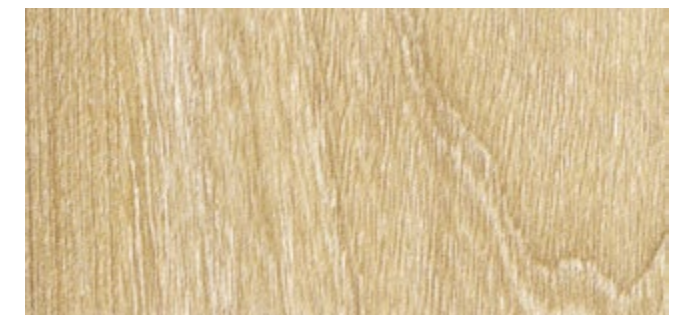
Elm **WD 066**



Teak **WD 720**



Oak **WD 163**



Oak **WD 906**

# Wood

[WD]



Oak **F G** **WD 084**



Maple **F G** **WD 301**



Teak **F G** **WD 305**



Maple **G** **WD 180**



Maple **F G** **WD 300**



Sycamore **F G** **WD 302**



Oak **G** **WD 818**



Cherry **G** **WD 008**



Maple **G** **WD 325**



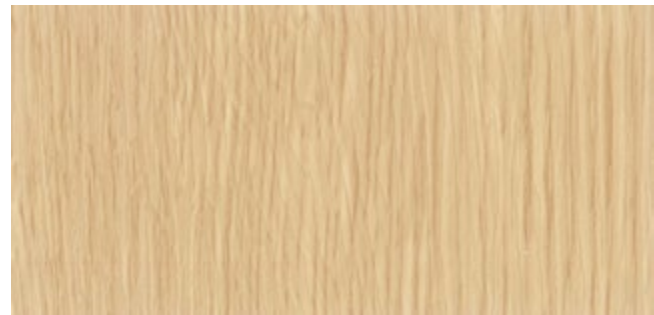
Limba **G** **WD 313**



Oak **F G** **WD 115**



Oak **G** **WD 225**



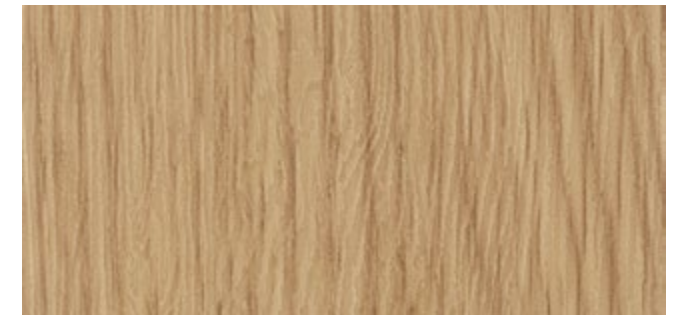
Oak **G** **WD 005**



Noce **G** **WD 034**



Oak **G** **WD 143**



Oak **F G** **WD 332**



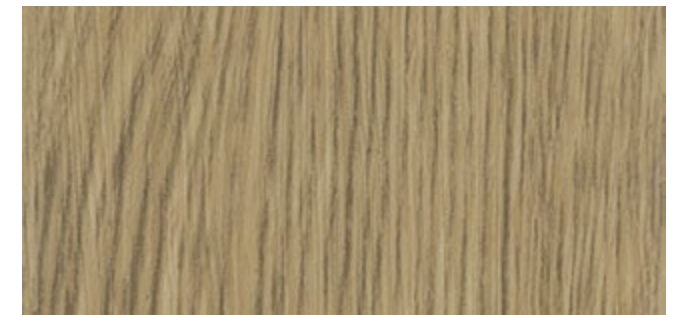
Maple **G** **WD 326**



Oak **G** **WD 168**



Pine **G** **WD 094**



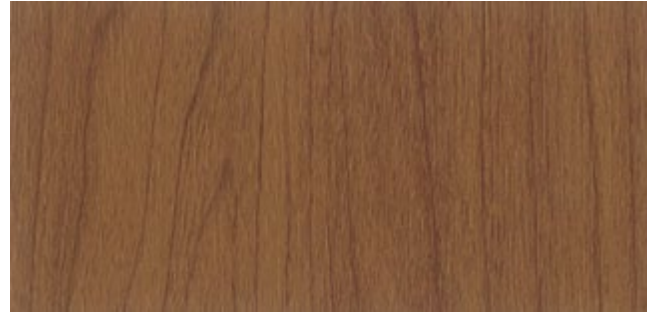
Oak **G** **WD 330**

# Wood

[WD]



Oak **WD 235**



Cherry **WD 024**



Noce **WD 035**



Oak **WD 169**



Acacia **WD 311**



Teak **WD 323**



Teak **WD 119**



**WD 235**



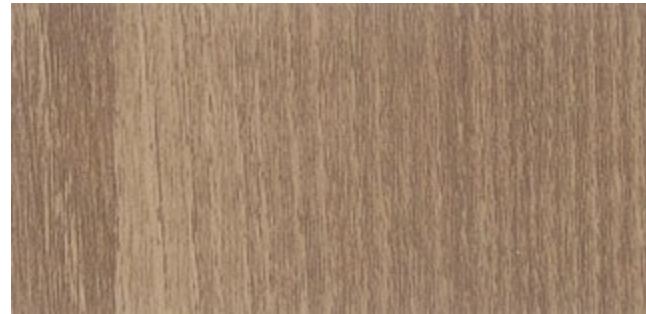
Oak **WD 234**

# Wood

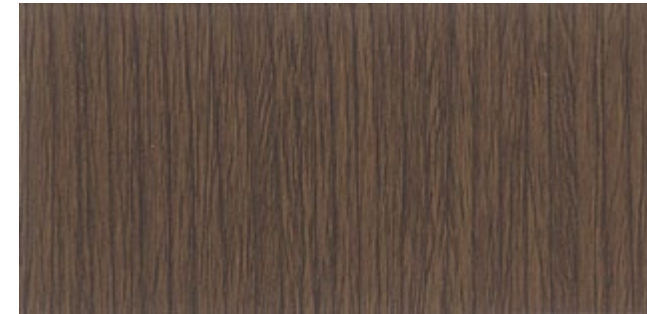
[WD]



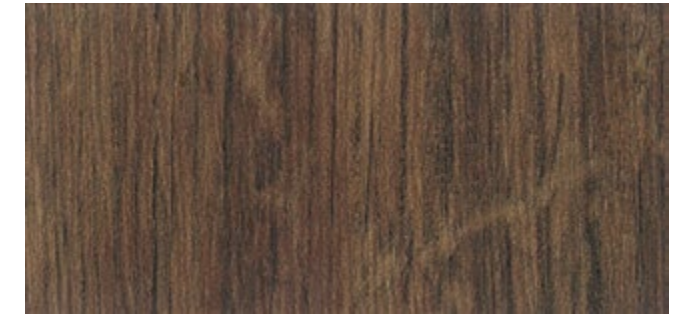
Cherry **G** **WD 634**



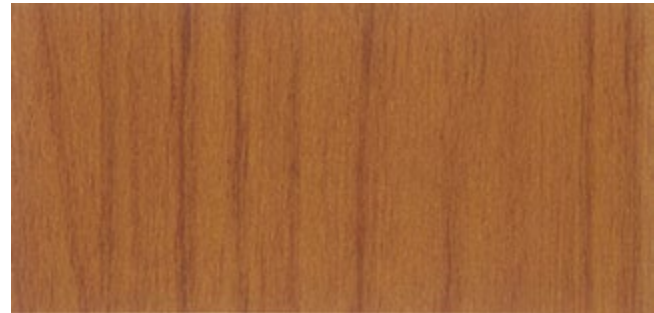
Acacia **G** **WD 049**



Walnut **F** **G** **WD 259**



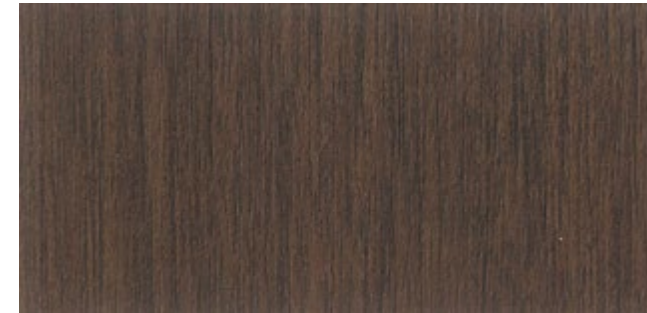
Sen Antique **G** **WD 315**



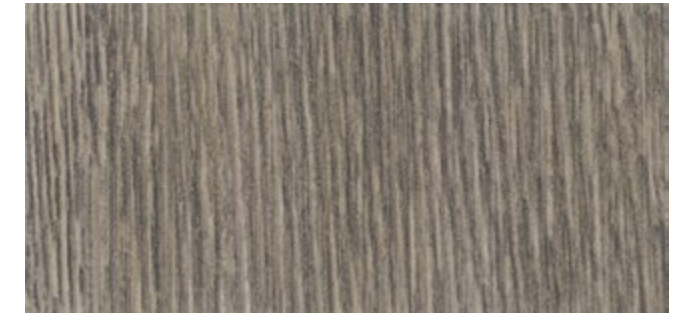
Cherry **G** **WD 664**



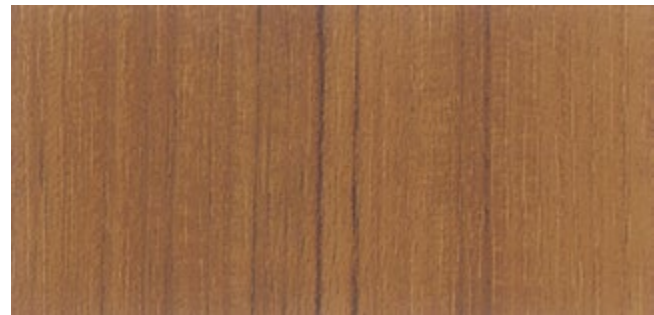
Anigre **G** **WD 820**



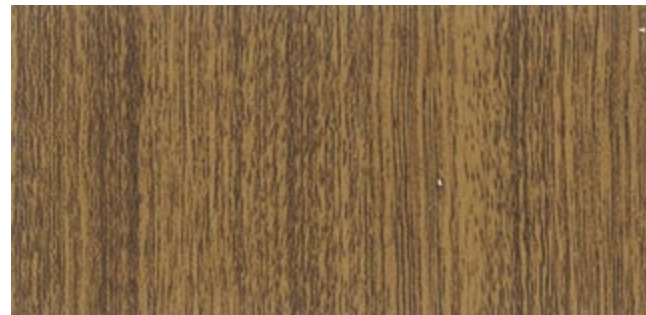
Walnut **F** **G** **WD 296**



Oak **G** **WD 162**



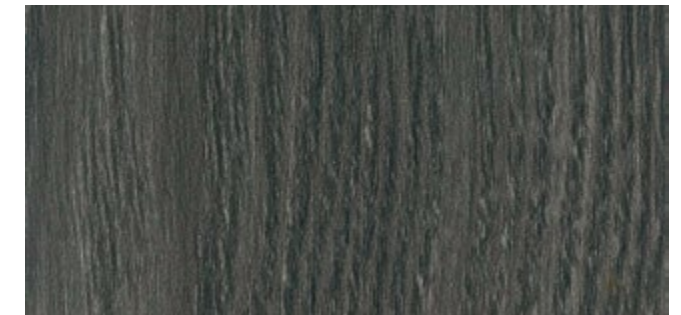
Teak **F** **G** **WD 306**



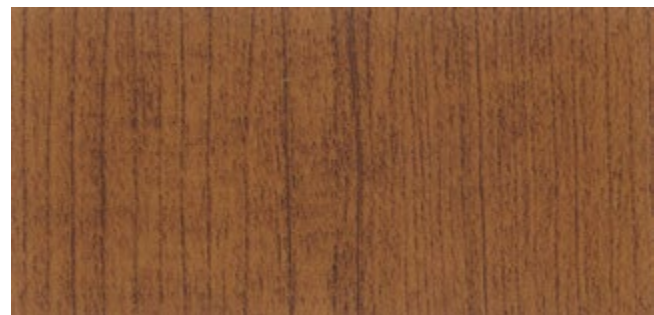
Walnut **G** **WD 506**



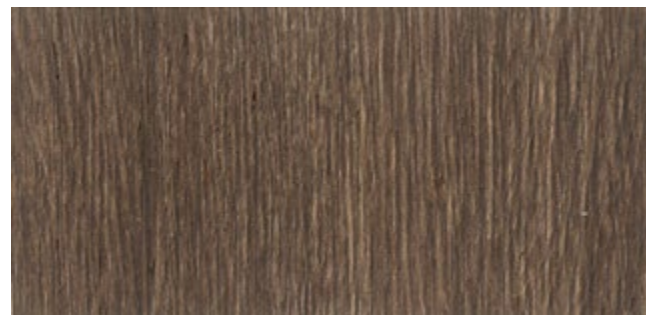
Walnut **G** **WD 189**



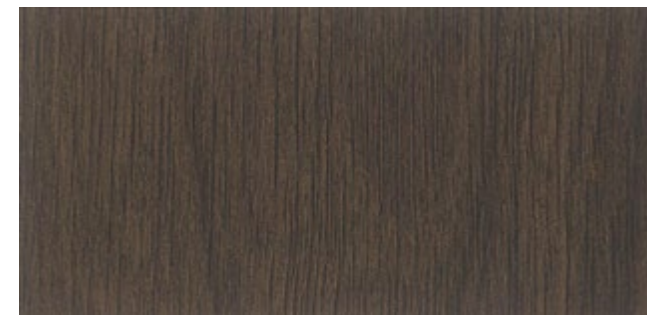
Real Panel Black **F** **G** **WD 175**



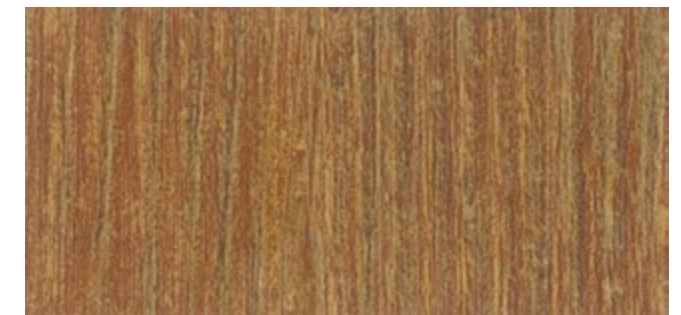
Cherry **G** **WD 312**



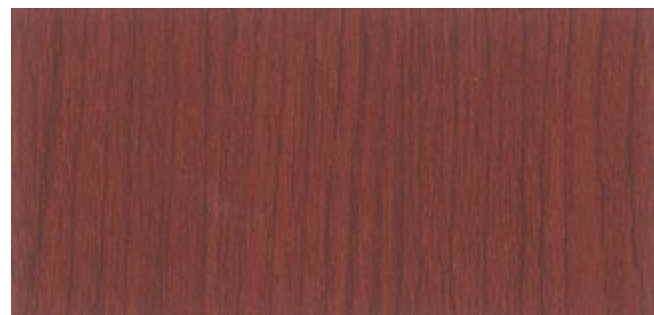
Teak **G** **WD 324**



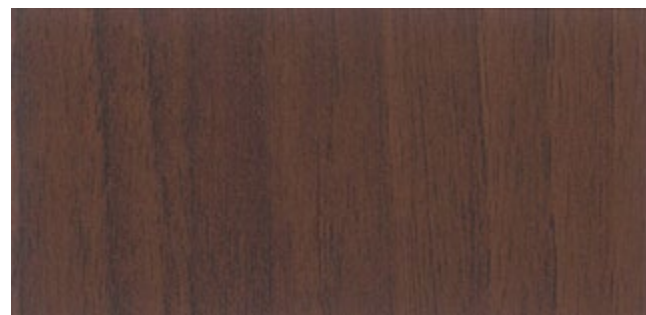
Walnut **G** **WD 288**



Antique Pine **G** **WD 126**



Cherry **G** **WD 624**



Teak **G** **WD 048**



Walnut **F** **G** **WD 188**



Graphic Weave **G** **WD 389**

# FABRIC

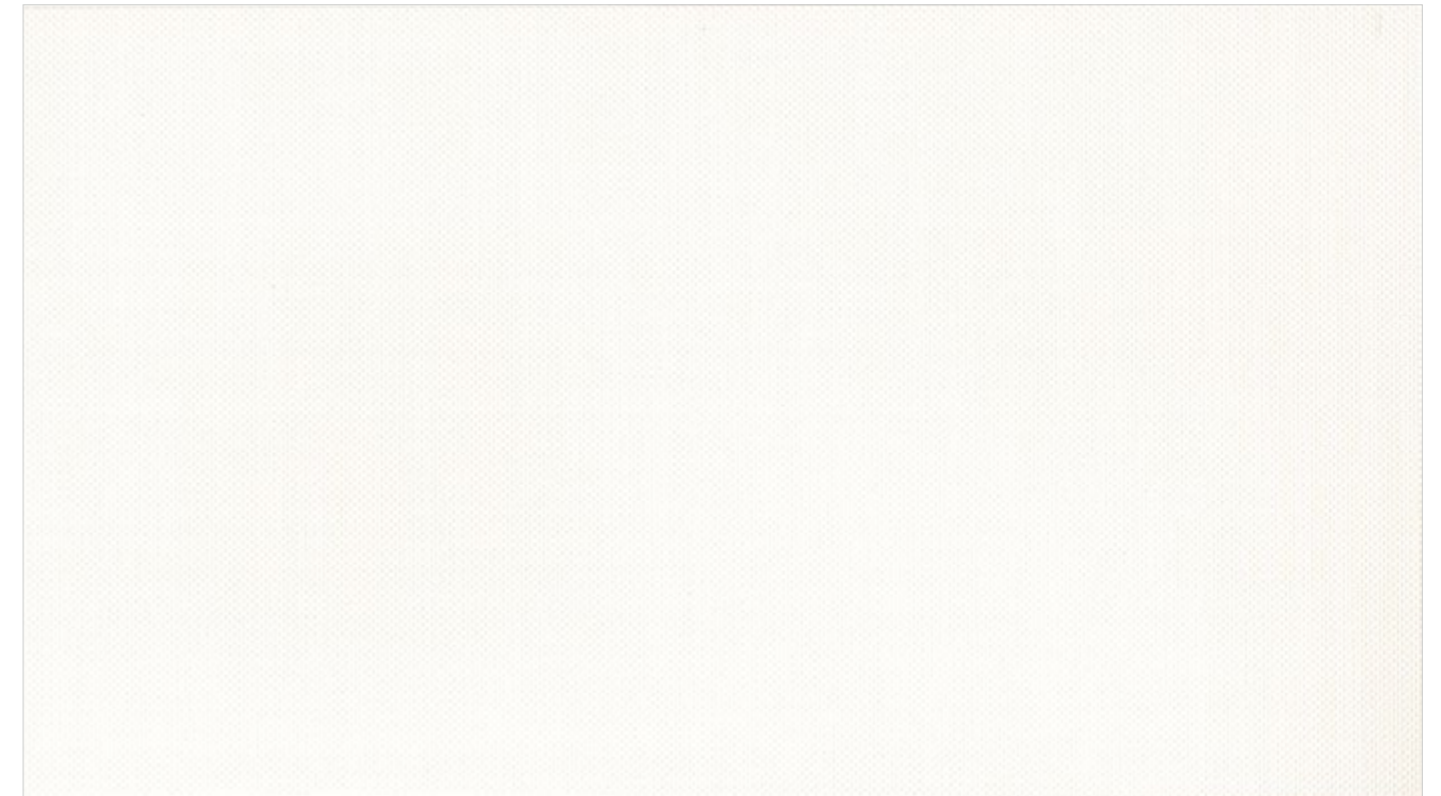
Fabric [FB/LW]

Leather [LT/LW]

Abstract & Paper Weave [AB/PW]

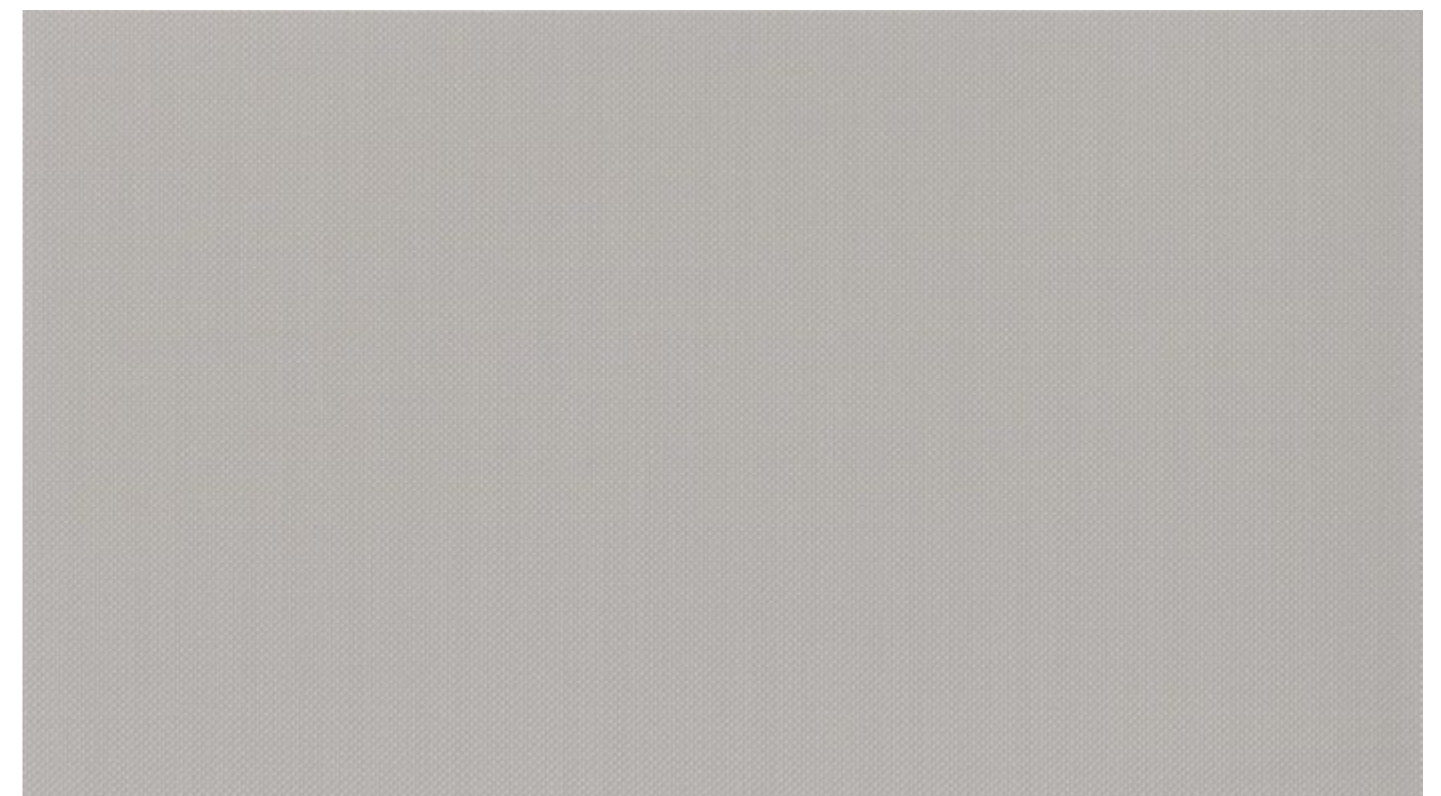


FB 928



Fabric

NEW F G FB 925

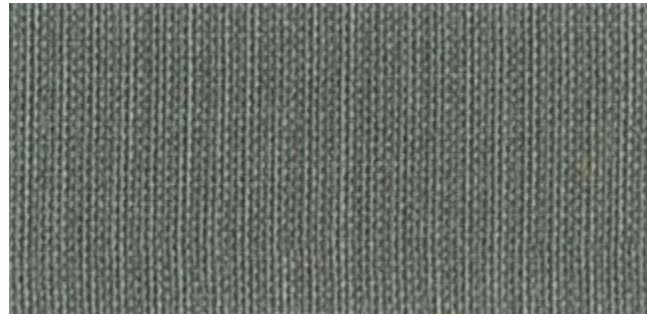


Fabric

NEW F G FB 928

# Fabric

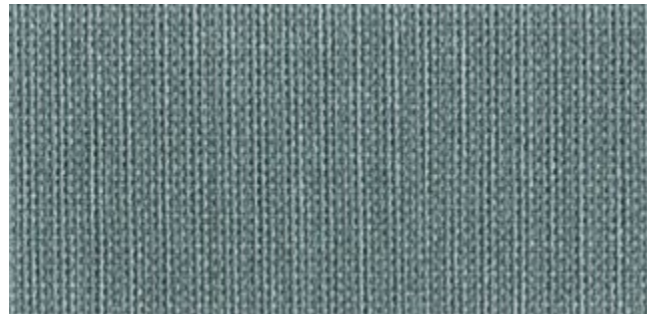
[FB/LW]



Fabric F G LW 724



Fabric G LW 464



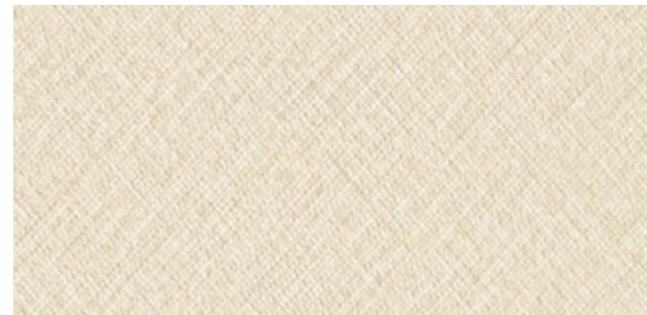
Fabric G LW 722



Fabric F G LW 461



Fabric F G LW 721



Fabric F G FB 899



Fabric F G LW 723



Fabric F G FB 851



FB 851



Linen F G FB 931



Linen F G FB 932



Linen G FB 933

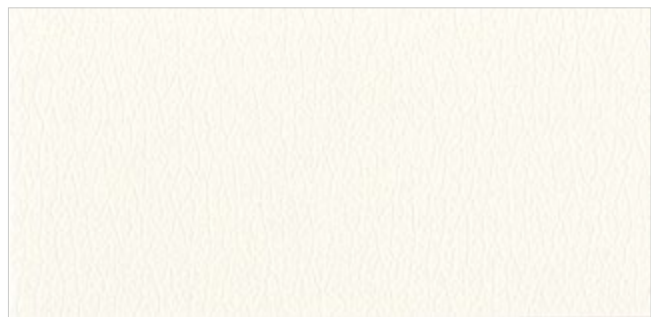
FABRIC

# Leather

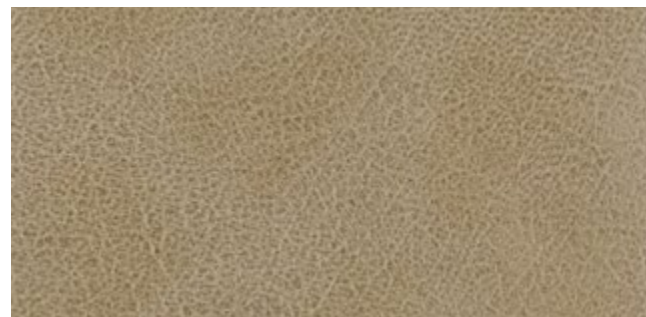
[LT/LW]



LW 748



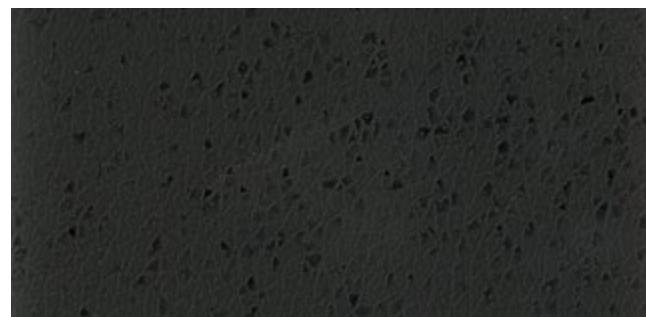
Basic LW 748



Artificial Leather LW 411



Leather LT 708



Artificial Leather LW 414

# Abstract & Paper Weave

[AB/PW]

NEW New Pattern F Flame Retardant G Non-Flame Retardant



PW 426



Paper Weave PW 426



Paper Weave PW 436



Diaper AB 021

## Application conditions and product handling

To ensure the best quality finish, please be sure to follow the recommended settings.

### Temperature and Dampness

---

\* INFEEL adhesive films should be applied when air and surface temperature are between 68°F(20°C) and 77°F(25°C).

\* The minimum recommended temperature is 53°F(11°C). If the temperature is below 53°F : use a heater, such as a portable gas-fired infrared radiant heater to raise the temperature.

### High Temperature / Low Temperature Dampness

---

\* Do not apply to damp surfaces. The surface should be completely dry prior to beginning the installation.

\* Utilize a heat gun for adhesion strengthening.

### Work Environment

---

#### Proper lighting

The working area should be well lit in order to prevent air pockets or wrinkles on the film.

#### Dust free

Working in a dust free area reduces the potential of particles sticking into the film.

### Product Handling

---

The film must be kept in a cool and dry place. The product should be installed within one year of purchase.

\* **Note)** If handling film in the winter, cold weather conditions can lead to cracks on the product.

\* **Tip)** Roll up the remaining film and store it inside a paper tube. This will prevent the film from getting damaged.

### Surface Preparation

---

The condition of the surface is critical for a quality installation and finish. As a rule, INFEEL adhesive film can be applied onto any clean, dry, smooth or even slightly porous surfaces. These surfaces must be free of dust, grease and wax : this includes for example, veneer board, aluminum, stainless steel, glass and most painted surfaces. Fresh primer must be completely dry before application because the vapors from the solvents can result in blistering and excessive shrinkage.

#### Matt Wood / Matt Design / Solid Matt

When constructing bending area, press the product with appropriate force and pressure it completely at surface because the product can be difficult to construct overlapping due to special surface coating treatment.

#### Wood / Veneer / Hardboard

1) Smooth and polish the surface, using #180 sandpaper.

2) If there are rough, rugged or joint areas then treat the areas with putty (a filling or tamping) and follow step 1.

3) Coat the surface evenly with the exclusive primer for INFEEL adhesive films.

#### Steel / Aluminum / Stainless

1) Smooth and polish the surface, using #180 sandpaper. Scrape the rust off the surface and remove the filth with paint(lacquer) thinner.

2) If there are rough, rugged or joint areas then treat the areas with poly - putty and follow step 1.

3) Coat the surface evenly with the exclusive primer for INFEEL adhesive films. Try not to leave primer residue to the surface border.

The logo for iNfeel is written in a black, elegant, cursive script. The 'i' is lowercase and has a dot, while the 'N' is uppercase and has a distinctive shape. The 'feel' part is also lowercase and flows into the end of the word.